

OSBORNE
GATE
AT JENNETTS PARK

BRACKNELL



THE MONARCH
APARTMENTS

 **REDROW**
A BETTER WAY TO LIVE




GROUND FLOOR



GROUND FLOOR

SANDHAM - PLOTS 87 & 90			
Living Room	12'9" x 11'7"	3.89 x 3.55 m	
Kitchen/ Dining	17'6" x 11'5"	5.33 x 3.48 m	
Bedroom 1	11'4" x 10'4"	3.46 x 3.16 m	
En-suite	6'9" x 4'4"	2.05 x 1.32 m	
Bedroom 2	10'4" x 9'0"	3.16 x 2.75 m	
Bathroom	7'9" x 6'3"	2.37 x 1.90 m	

CLAYDON - PLOTS 88 & 89			
Kitchen/ Living/ Dining	25'2" x 10'7"	7.66 x 3.23 m	
Bedroom 1	16'11" x 9'1"	5.16 x 2.77 m	
En-suite	8'5" x 4'9"	2.57 x 1.45 m	
Bedroom 2	16'11" x 8'3"	5.16 x 2.52 m	
Bathroom	8'3" x 6'3"	2.52 x 1.91 m	

KEY  Electric hob. Note: Bedroom dimensions taken into wardrobe recess.

Customers should note this illustration is an example of the apartment type. Please refer to your sales consultant for details of any elevational differences. All dimensions indicated are approximate and the furniture layouts are for illustrative purpose only. The specifications will vary from site to site and plot to plot. Detailed plans and specifications are available for inspection for each plot at our Sales Centre during working hours and customers must check their individual specifications prior to making a reservation. Please note, steel frame apartment types will benefit from a slight increase to some room sizes.

FIRST FLOOR



FIRST FLOOR

CLAREMONT - PLOTS 91 & 103

Living Room	12'9" x 11'7"	3.89 x 3.55 m
Kitchen	17'6" x 11'5"	5.33 x 3.48 m
Bedroom 1	11'4" x 10'4"	3.46 x 3.16 m
En-suite	6'9" x 4'4"	2.05 x 1.32 m
Bedroom 2	10'4" x 9'0"	3.16 x 2.75 m
Bathroom	7'9" x 6'3"	2.37 x 1.90 m

STRATFIELD - PLOTS 92 & 102

Kitchen/ Living/ Dining	26'6" x 11'0"	8.09 x 3.37 m
Bedroom 1	15'3" x 9'11"	4.65 x 3.02 m
Bathroom	7'5" x 5'7"	2.26 x 1.70m

CLARENCE - PLOTS 93 & 101

Kitchen/ Living/ Dining	24'8" x 11'7"	7.52 x 3.54 m
Bedroom 1	12'9" x 10'2"	3.90 x 3.10 m
Bathroom	7'6" x 5'10"	2.29 x 1.78 m

WOBURN - PLOTS 94 & 100

Kitchen/ Living/ Dining	24'1" x 13'4"	7.34 x 4.08 m
Bedroom 1	10'4" x 10'0"	3.16 x 3.07 m
En-suite	6'9" x 4'11"	2.07 x 1.50 m
Bedroom 2	10'4" x 8'11"	3.16 x 2.71 m
Bathroom	8'7" x 5'11"	2.61 x 1.82 m

FENTON - PLOT 95

Kitchen/ Living/ Dining	24'10" x 10'8"	7.57 x 3.26 m
Bedroom 1	13'9" x 9'2"	4.21 x 2.81 m
En-suite	6'10" x 4'11"	2.08 x 1.50 m
Bedroom 2	10'4" x 9'11"	3.15 x 3.04 m
Bathroom	7'3" x 6'4"	2.22 x 1.92 m

WIMBOURNE - PLOT 96

Kitchen/ Living/ Dining	24'10" x 10'5"	7.57 x 3.18 m
Bedroom 1	14'3" x 9'6"	4.34 x 2.89 m
Bathroom	7'1" x 5'11"	2.16 x 1.81 m

LONGFORD - PLOT 97

Kitchen/ Living/ Dining	23'4" x 10'5"	7.11 x 3.19 m
Bedroom 1	11'0" x 12'10"	3.35 x 3.91 m
En-suite	6'9" x 5'1"	2.07 x 1.56 m
Bedroom 2	12'5" x 8'10"	3.78 x 2.70 m
Bathroom	7'2" x 6'3"	2.18 x 1.91 m

KINGSBURY - PLOT 98

Kitchen/ Living/ Dining	25'2" x 10'7"	7.66 x 3.22 m
Bedroom 1	16'11" x 9'1"	5.15 x 2.77 m
En-suite	8'7" x 4'9"	2.63 x 1.45 m
Bedroom 2	15'4" x 8'2"	4.67 x 2.49 m
Bathroom	8'3" x 6'3"	2.52 x 1.91 m

FENTON+ - PLOT 99

Kitchen/ Living/ Dining	24'10" x 10'7"	7.57 x 3.22 m
Bedroom 1	13'10" x 9'3"	4.21 x 2.81 m
En-suite	6'10" x 4'11"	2.08 x 1.50 m
Bedroom 2	10'4" x 9'11"	3.15 x 3.03 m
Bathroom	7'6" x 6'3"	2.29 x 1.91 m

KEY Electric hob. Note: Bedroom dimensions taken into wardrobe recess.

Customers should note this illustration is an example of the apartment type. Please refer to your sales consultant for details of any elevational differences. All dimensions indicated are approximate and the furniture layouts are for illustrative purpose only. The specifications will vary from site to site and plot to plot. Detailed plans and specifications are available for inspection for each plot at our Sales Centre during working hours and customers must check their individual specifications prior to making a reservation. Please note, steel frame apartment types will benefit from a slight increase to some room sizes.

SECOND FLOOR



SECOND FLOOR

CLAREMONT - PLOTS 104 & 116

Living Room	12'9" x 11'7"	3.89 x 3.55 m
Kitchen	17'6" x 11'5"	5.33 x 3.48 m
Bedroom 1	11'4" x 10'4"	3.46 x 3.16 m
En-suite	6'9" x 4'4"	2.05 x 1.32 m
Bedroom 2	10'4" x 9'0"	3.16 x 2.75 m
Bathroom	7'9" x 6'3"	2.37 x 1.90 m

STRATFIELD - PLOTS 105 & 115

Kitchen/ Living/ Dining	26'6" x 11'0"	8.09 x 3.37 m
Bedroom 1	15'3" x 9'11"	4.65 x 3.02 m
Bathroom	7'5" x 5'7"	2.26 x 1.70m

CLARENCE - PLOTS 106 & 114

Kitchen/ Living/ Dining	24'8" x 11'7"	7.52 x 3.54 m
Bedroom 1	12'9" x 10'2"	3.90 x 3.10 m
Bathroom	7'6" x 5'10"	2.29 x 1.78 m

WOBURN - PLOTS 107 & 113

Kitchen/ Living/ Dining	24'1" x 13'4"	7.34 x 4.08 m
Bedroom 1	10'4" x 10'0"	3.16 x 3.07 m
En-suite	6'9" x 4'11"	2.07 x 1.50 m
Bedroom 2	10'4" x 8'11"	3.16 x 2.71 m
Bathroom	8'7" x 5'11"	2.61 x 1.82 m

FENTON - PLOT 108

Kitchen/ Living/ Dining	24'10" x 10'8"	7.57 x 3.26 m
Bedroom 1	13'9" x 9'2"	4.21 x 2.81 m
En-suite	6'10" x 4'11"	2.08 x 1.50 m
Bedroom 2	10'4" x 9'11"	3.15 x 3.04 m
Bathroom	7'3" x 6'4"	2.22 x 1.92 m

WIMBOURNE - PLOT 109

Kitchen/ Living/ Dining	24'10" x 10'5"	7.57 x 3.18 m
Bedroom 1	14'3" x 9'6"	4.34 x 2.89 m
Bathroom	7'1" x 5'11"	2.16 x 1.81 m

LONGFORD - PLOT 110

Kitchen/ Living/ Dining	23'4" x 10'5"	7.11 x 3.19 m
Bedroom 1	11'0" x 12'10"	3.35 x 3.91 m
En-suite	6'9" x 5'1"	2.07 x 1.56 m
Bedroom 2	12'5" x 8'10"	3.78 x 2.70 m
Bathroom	7'2" x 6'3"	2.18 x 1.91 m

KINGSBURY - PLOT 111

Kitchen/ Living/ Dining	25'2" x 10'7"	7.66 x 3.22 m
Bedroom 1	16'11" x 9'1"	5.15 x 2.77 m
En-suite	8'7" x 4'9"	2.63 x 1.45 m
Bedroom 2	15'4" x 8'2"	4.67 x 2.49 m
Bathroom	8'3" x 6'3"	2.52 x 1.91 m

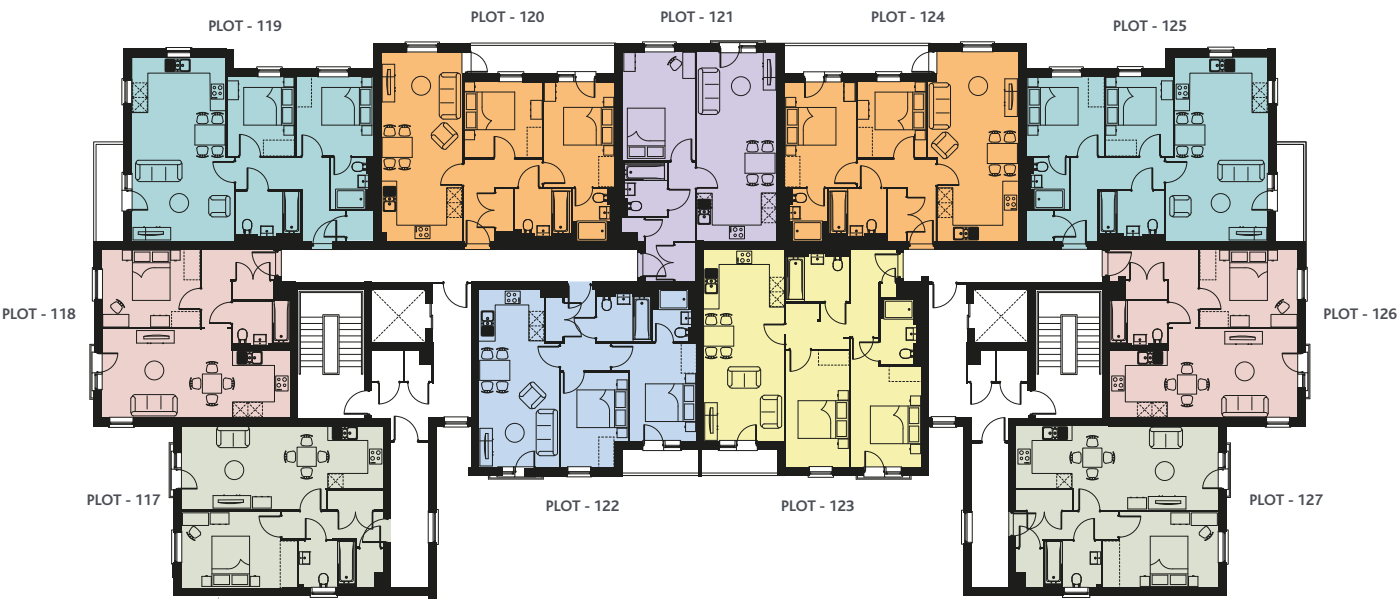
FENTON+ - PLOT 112

Kitchen/ Living/ Dining	24'10" x 10'7"	7.57 x 3.22 m
Bedroom 1	13'10" x 9'3"	4.21 x 2.81 m
En-suite	6'10" x 4'11"	2.08 x 1.50 m
Bedroom 2	10'4" x 9'11"	3.15 x 3.03 m
Bathroom	7'6" x 6'3"	2.29 x 1.91 m

KEY  Electric hob. Note: Bedroom dimensions taken into wardrobe recess.

Customers should note this illustration is an example of the apartment type. Please refer to your sales consultant for details of any elevational differences. All dimensions indicated are approximate and the furniture layouts are for illustrative purpose only. The specifications will vary from site to site and plot to plot. Detailed plans and specifications are available for inspection for each plot at our Sales Centre during working hours and customers must check their individual specifications prior to making a reservation. Please note, steel frame apartment types will benefit from a slight increase to some room sizes.

THIRD FLOOR



THIRD FLOOR

STRATFIELD + - PLOTS 117 & 127			
Kitchen/ Living/ Dining	26'6" x 11'0"	8.09 x 3.37 m	
Bedroom 1	15'3" x 9'11"	4.65 x 3.02 m	
Bathroom	7'5" x 5'7"	2.26 x 1.70m	

CLARENCE - PLOTS 118 & 126			
Kitchen/ Living/ Dining	24'8" x 11'7"	7.52 x 3.54 m	
Bedroom 1	12'9" x 10'2"	3.90 x 3.10 m	
Bathroom	7'6" x 5'10"	2.29 x 1.78 m	

WOBURN - PLOTS 119 & 125			
Kitchen/ Living/ Dining	24'1" x 13'4"	7.34 x 4.08 m	
Bedroom 1	10'4" x 10'0"	3.16 x 3.07 m	
En-suite	6'9" x 4'11"	2.07 x 1.50 m	
Bedroom 2	10'4" x 8'11"	3.16 x 2.71 m	
Bathroom	8'7" x 5'11"	2.61 x 1.82 m	

FENTON - PLOT 120			
Kitchen/ Living/ Dining	24'10" x 10'8"	7.57 x 3.26 m	
Bedroom 1	13'9" x 9'2"	4.21 x 2.81 m	
En-suite	6'10" x 4'11"	2.08 x 1.50 m	
Bedroom 2	10'4" x 9'11"	3.15 x 3.04 m	
Bathroom	7'3" x 6'4"	2.22 x 1.92 m	

WIMBOURNE - PLOT 121			
Kitchen/ Living/ Dining	24'10" x 10'5"	7.57 x 3.18 m	
Bedroom 1	14'3" x 9'6"	4.34 x 2.89 m	
Bathroom	7'1" x 5'11"	2.16 x 1.81 m	

LONGFORD - PLOT 122			
Kitchen/ Living/ Dining	23'4" x 10'5"	7.11 x 3.19 m	
Bedroom 1	11'0" x 12'10"	3.35 x 3.91 m	
En-suite	6'9" x 5'1"	2.07 x 1.56 m	
Bedroom 2	12'5" x 8'10"	3.78 x 2.70 m	
Bathroom	7'2" x 6'3"	2.18 x 1.91 m	

KINGSBURY - PLOT 123			
Kitchen/ Living/ Dining	25'2" x 10'7"	7.66 x 3.22 m	
Bedroom 1	16'11" x 9'1"	5.15 x 2.77 m	
En-suite	8'7" x 4'9"	2.63 x 1.45 m	
Bedroom 2	15'4" x 8'2"	4.67 x 2.49 m	
Bathroom	8'3" x 6'3"	2.52 x 1.91 m	

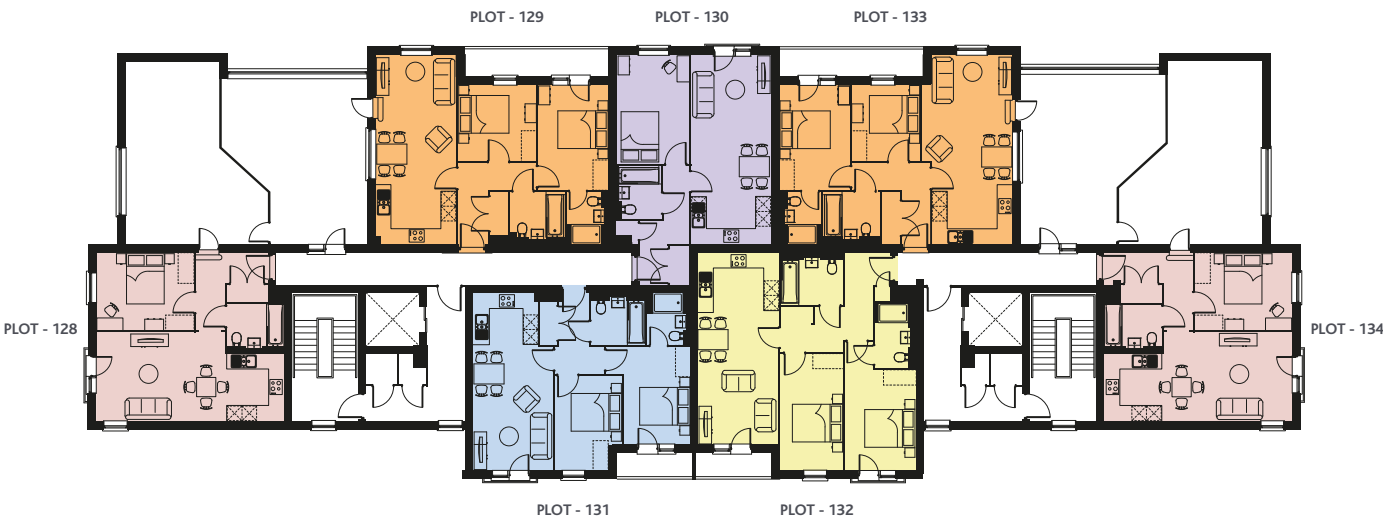
FENTON+ - PLOT 124			
Kitchen/ Living/ Dining	24'10" x 10'7"	7.57 x 3.22 m	
Bedroom 1	13'10" x 9'3"	4.21 x 2.81 m	
En-suite	6'10" x 4'11"	2.08 x 1.50 m	
Bedroom 2	10'4" x 9'11"	3.15 x 3.03 m	
Bathroom	7'6" x 6'3"	2.29 x 1.91 m	

KEY Electric hob. Note: Bedroom dimensions taken into wardrobe recess.

Customers should note this illustration is an example of the apartment type. Please refer to your sales consultant for details of any elevational differences. All dimensions indicated are approximate and the furniture layouts are for illustrative purpose only. The specifications will vary from site to site and plot to plot. Detailed plans and specifications are available for inspection for each plot at our Sales Centre during working hours and customers must check their individual specifications prior to making a reservation. Please note, steel frame apartment types will benefit from a slight increase to some room sizes.



FOURTH FLOOR



FOURTH FLOOR

CLARENCE - PLOTS 128 & 134

Kitchen/ Living/ Dining	24'8" x 11'7"	7.52 x 3.54 m
Bedroom 1	12'9" x 10'2"	3.90 x 3.10 m
Bathroom	7'6" x 5'10"	2.29 x 1.78 m

FENTON - PLOT 129

Kitchen/ Living/ Dining	24'10" x 10'8"	7.57 x 3.26 m
Bedroom 1	13'9" x 9'2"	4.21 x 2.81 m
En-suite	6'10" x 4'11"	2.08 x 1.50 m
Bedroom 2	10'4" x 9'11"	3.15 x 3.04 m
Bathroom	7'3" x 6'4"	2.22 x 1.92 m

WIMBOURNE - PLOT 130

Kitchen/ Living/ Dining	24'10" x 10'5"	7.57 x 3.18 m
Bedroom 1	14'3" x 9'6"	4.34 x 2.89 m
Bathroom	7'1" x 5'11"	2.16 x 1.81 m

LONGFORD - PLOT 131

Kitchen/ Living/ Dining	23'4" x 10'5"	7.11 x 3.19 m
Bedroom 1	11'0" x 12'10"	3.35 x 3.91 m
En-suite	6'9" x 5'1"	2.07 x 1.56 m
Bedroom 2	12'5" x 8'10"	3.78 x 2.70 m
Bathroom	7'2" x 6'3"	2.18 x 1.91 m

KINGSBURY - PLOT 132

Kitchen/ Living/ Dining	25'2" x 10'7"	7.66 x 3.22 m
Bedroom 1	16'11" x 9'1"	5.15 x 2.77 m
En-suite	8'7" x 4'9"	2.63 x 1.45 m
Bedroom 2	15'4" x 8'2"	4.67 x 2.49 m
Bathroom	8'3" x 6'3"	2.52 x 1.91 m

FENTON+ - PLOT 133

Kitchen/ Living/ Dining	24'10" x 10'7"	7.57 x 3.22 m
Bedroom 1	13'10" x 9'3"	4.21 x 2.81 m
En-suite	6'10" x 4'11"	2.08 x 1.50 m
Bedroom 2	10'4" x 9'11"	3.15 x 3.03 m
Bathroom	7'6" x 6'3"	2.29 x 1.91 m

KEY  Electric hob. Note: Bedroom dimensions taken into wardrobe recess.

Customers should note this illustration is an example of the apartment type. Please refer to your sales consultant for details of any elevational differences. All dimensions indicated are approximate and the furniture layouts are for illustrative purpose only. The specifications will vary from site to site and plot to plot. Detailed plans and specifications are available for inspection for each plot at our Sales Centre during working hours and customers must check their individual specifications prior to making a reservation. Please note, steel frame apartment types will benefit from a slight increase to some room sizes.



BRACKNELL

OSBORNE GATE

Bracknell, Berkshire RG12 8SS

Telephone: 01344 798692



EMS 667178

**CONSUMER
CODE FOR
HOME BUILDERS**

www.consumercode.co.uk