



THE LOFTINGS

MAIDENHEAD

HOUSES



# ETON + ETON 3

2 & 3 BEDROOM HOMES  
TERRACE



Simple, yet stylish, compact yet undeniably chic, The Eton & Eton 3 offers the perfect combination of quality and value, space and savings, all created with the same high levels of craftsmanship that set all Redrow homes apart.



## GROUND FLOOR

Lounge	10'3" x 15'11"	4.85 x 3.14 m
Kitchen/ Dining	14'3" x 10'1"	4.34 x 3.08 m
Cloaks	5'8" x 3'9"	1.72 x 1.14 m

## FIRST FLOOR

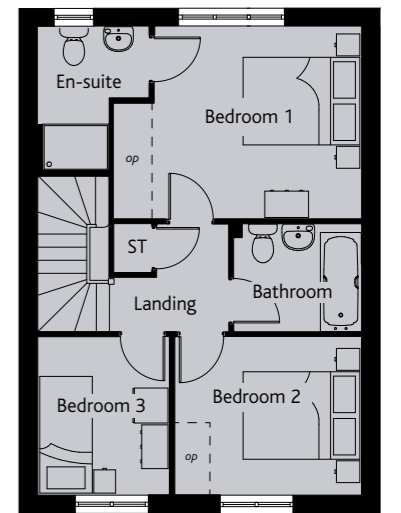
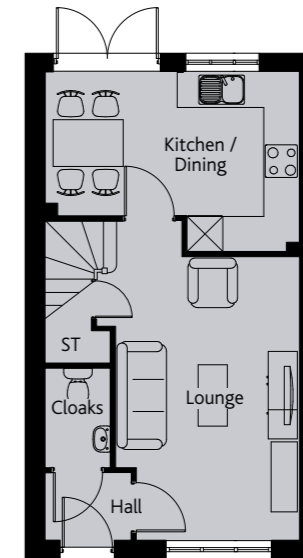
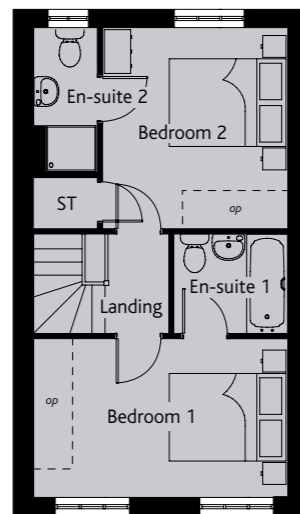
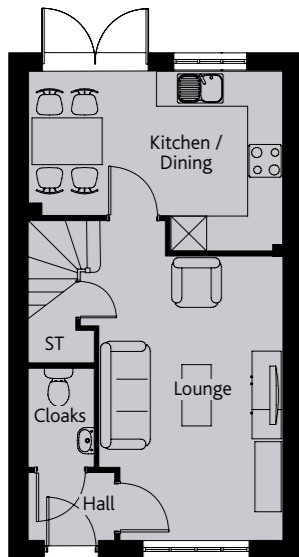
Bedroom 1	14'3" x 8'10"	4.34 x 2.71 m
En-suite	6'6" x 5'8"	1.97 x 1.73 m
Bedroom 2	11'3" x 10'4"	3.43 x 3.16 m
Bathroom	8'2" x 3'8"	2.50 x 1.12 m

## GROUND FLOOR

Lounge	10'3" x 15'11"	4.85 x 3.14 m
Kitchen/ Dining	14'3" x 10'1"	4.34 x 3.08 m
Cloaks	5'8" x 3'9"	1.72 x 1.14 m

## FIRST FLOOR

Bedroom 1	11'7" x 10'9"	3.55 x 3.29 m
En-suite	8'2" x 7'0"	2.50 x 2.10 m
Bedroom 2	10'6" x 8'10"	3.20 x 2.70 m
Bedroom 3	8'10" x 7'4"	2.70 x 2.25 m
Bathroom	7'3" x 6'2"	2.22 x 1.87 m



2 BEDROOM HOME

Customers should note this illustration is an example of the Walton house type. All dimensions indicated are approximate and the furniture layout is for illustrative purposes only. Homes may be 'handed' (mirror image) versions of the illustrations, and may be detached, semi-detached or terraced. Materials used may differ from plot to plot including render and roof tile colours. Detailed plans and specifications are available for inspection for each plot at our Sales Centre during working hours and customers must check their individual specifications prior to making a reservation.

KEY Hob Hot water cylinder ST Cupboard

Note: Bedroom dimensions taken into wardrobe recess. All wardrobes are subject to site specification. Please see Sales Consultant for further details.

3 BEDROOM HOME



# WALTON

## 3 BEDROOM HOME

### DETACHED



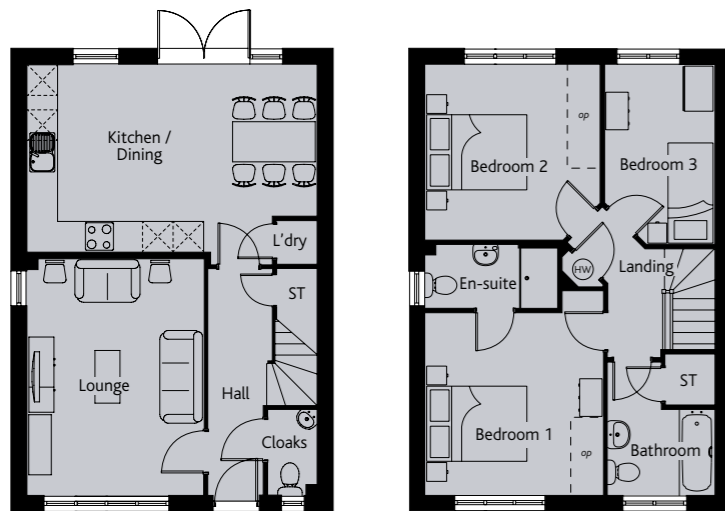
The Walton has an authentic aura about it that underlines the sense of quality and craftsmanship that is evident throughout. The open plan interiors and spacious bedrooms make spending time together a pleasure. The Walton is truly a home for the modern family.

#### GROUND FLOOR

Lounge	15'5" x 11'6"	4.71 x 3.52 m
Kitchen/ Dining	18'11" x 12'2"	5.77 x 3.73 m
Cloaks	5'9" x 3'4"	1.74 x 1.01 m

#### FIRST FLOOR

Bedroom 1	11'11" x 11'8"	3.63 x 3.55 m
En-suite	8'9" x 4'3"	2.67 x 1.30 m
Bedroom 2	11'5" x 11'5"	3.50 x 3.49 m
Bedroom 3	11'9" x 7'2"	3.58 x 2.19 m
Bathroom	7'1" x 5'9"	2.16 x 1.74 m



3 BEDROOM HOME

Customers should note this illustration is an example of the Walton house type. All dimensions indicated are approximate and the furniture layout is for illustrative purposes only. Homes may be 'handed' (mirror image) versions of the illustrations, and may be detached, semi-detached or terraced. Materials used may differ from plot to plot including render and roof tile colours. Detailed plans and specifications are available for inspection for each plot at our Sales Centre during working hours and customers must check their individual specifications prior to making a reservation.

KEY Hob Hot water cylinder ST Cupboard  
 Note: Bedroom dimensions taken into wardrobe recess. All wardrobes are subject to site specification. Please see Sales Consultant for further details.



# CHISWICK

## 4 BEDROOM HOME

### TERRACE & SEMI DETACHED



We understand how a little extra space can go a long way to enhancing your home, and so we've given this fabulous family home three generous double bedrooms, so everyone has the room they need.

#### GROUND FLOOR

Lounge	15'5" x 11'3"	4.65 x 3.43 m
Kitchen/ Dining	15'6" x 8'2"	4.73 x 2.49 m
Cloaks	6'2" x 3'3"	1.87 x 0.99 m

#### FIRST FLOOR

Bedroom 2	15'6" x 8'6"	4.73 x 2.60 m
Bedroom 3	11'3" x 8'6"	3.43 x 2.60 m
Bedroom 4	10'1" x 6'5"	3.08 x 1.96 m
Bathroom	6'7" x 6'3"	2.00 x 1.91 m

#### SECOND FLOOR

Bedroom 1	18'5" x 8'9"	5.62 x 2.67 m
En-suite	7'9" x 6'6"	2.37 x 1.99 m



4 BEDROOM HOME

Customers should note this illustration is an example of the Chiswick house type. All dimensions indicated are approximate and the furniture layout is for illustrative purposes only. Homes may be 'handed' (mirror image) versions of the illustrations, and may be detached, semi-detached or terraced. Materials used may differ from plot to plot including render and roof tile colours. Detailed plans and specifications are available for inspection for each plot at our Sales Centre during working hours and customers must check their individual specifications prior to making a reservation.

KEY Hob Hot water cylinder ST Cupboard  
 Note: Bedroom dimensions taken into wardrobe recess. All wardrobes are subject to site specification. Please see Sales Consultant for further details.





THE LOFTINGS

MAIDENHEAD

Telephone: 01628 703798

[WWW.REDRROW.CO.UK](http://WWW.REDRROW.CO.UK)

