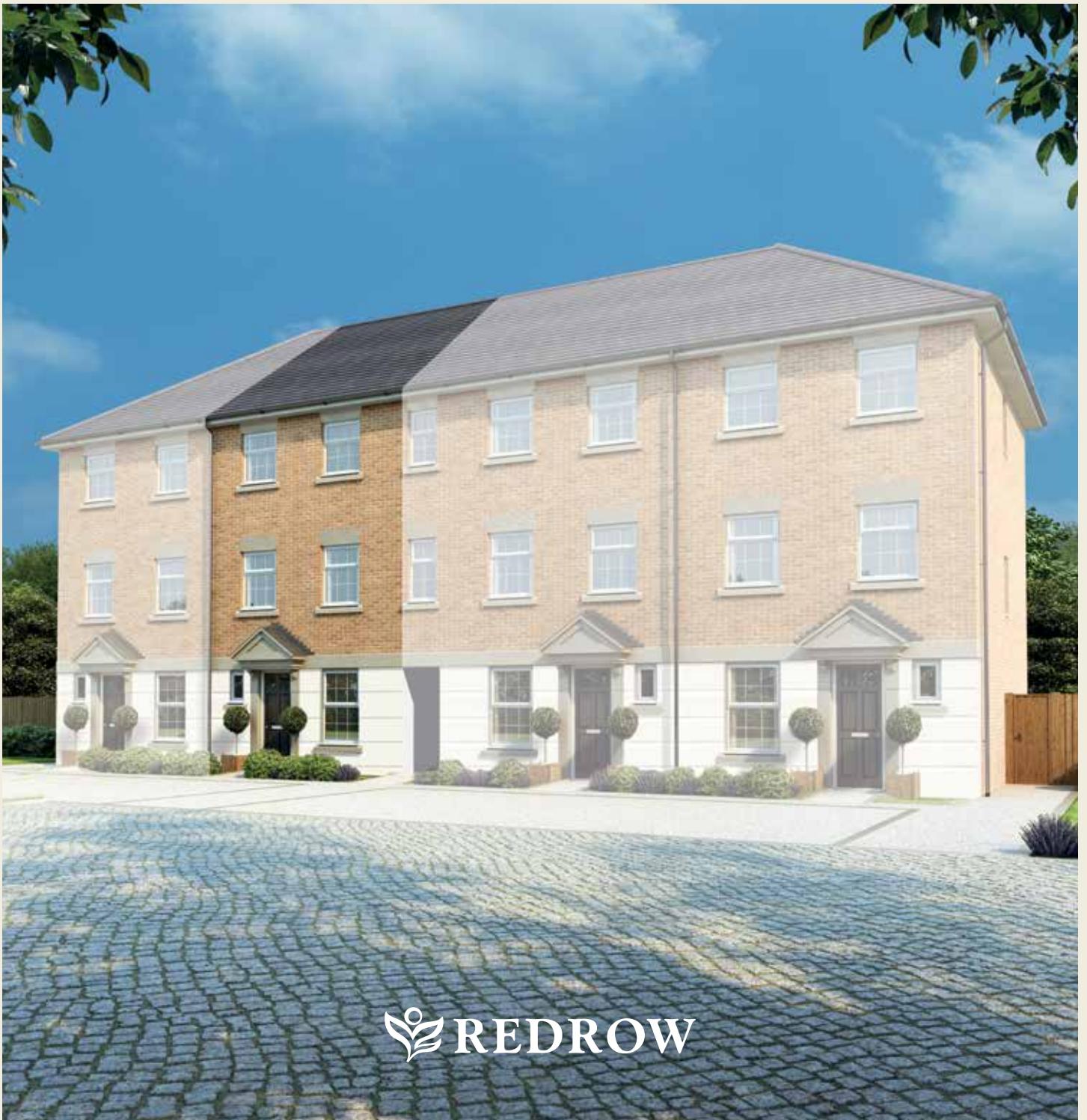




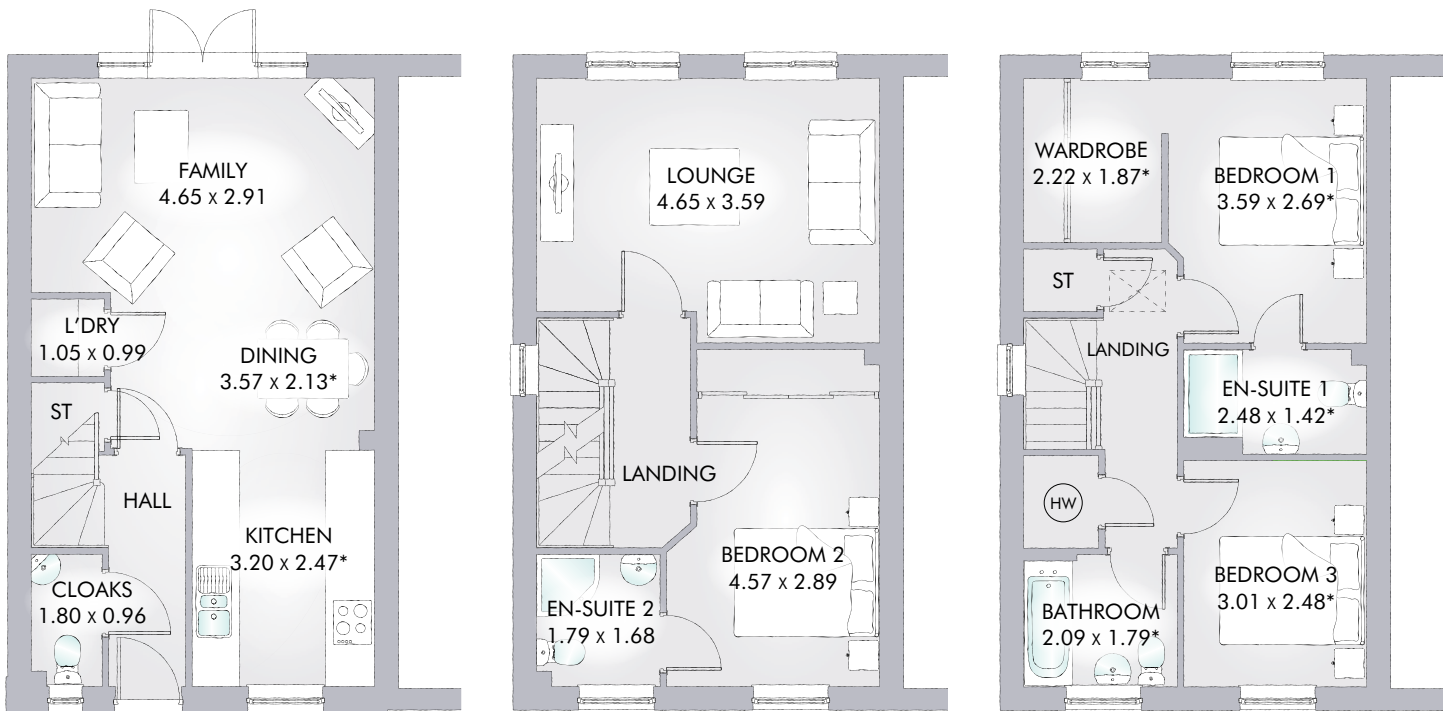
PORTMAN^{MID}

THREE BEDROOM HOME



 REDROW

PORTMAN^{MID}



The layout of the Portman^{MID} epitomises the modern townhouse lifestyle. An open plan ground floor is ideal for entertaining, whilst a separate lounge on the first floor is perfect for relaxing. An en-suite to two of the three spacious bedrooms creates a space for everyone to call their own.

THREE BEDROOM HOME

GROUND FLOOR

Family	15'3" x 14'0"	4.65 x 3.59 m
Dining	11'9" x 7'0"	3.57 x 2.13 m*
Kitchen	10'6" x 8'1"	3.20 x 2.47 m*
Laundry	3'5" x 3'3"	1.05 x 0.99 m
Cloaks	5'11" x 1'8"	1.80 x 0.96 m

FIRST FLOOR

Lounge	15'3" x 10'4"	4.65 x 3.59 m
Bedroom 2	15'0" x 9'6"	4.57 x 2.89 m
En-suite 2	5'10" x 5'6"	1.79 x 1.68 m

SECOND FLOOR

Bedroom 1	14'1" x 10'5"	3.59 x 2.69 m*
En-suite 1	9'6" x 5'5"	2.48 x 1.42 m*
Wardrobe	7'3" x 6'2"	2.22 x 1.87 m*
Bedroom 3	11'8" x 8'2"	3.01 x 2.48 m*
Bathroom	6'9" x 5'9"	2.09 x 1.79 m*

CONSUMER CODE FOR HOME BUILDERS

www.consumercode.co.uk

Customers should note this illustration is an example of the Portman^{MID} house type. All dimensions indicated are approximate and the furniture layout is for illustrative purposes only. Homes may be 'handed' (mirror image) versions of the illustrations, and may be detached, semi-detached or terraced. Materials used may differ from plot to plot including render and roof tile colours. Detailed plans and specifications are available for inspection for each plot at our Sales Centre during working hours and customers must check their individual specifications prior to making a reservation.

KEY Hob ST Storage HW Hot water cylinder Loft hatch
*Max dimensions Note: Bedroom dimensions taken into wardrobe recess. All wardrobes are subject to site specification. Please see Sales Consultant for further details.

Traditional homes, built the way you remember

