



# BRUNSWICK

THREE BEDROOM HOME



 REDROW





# BRUNSWICK

THREE BEDROOM HOME



 REDROW





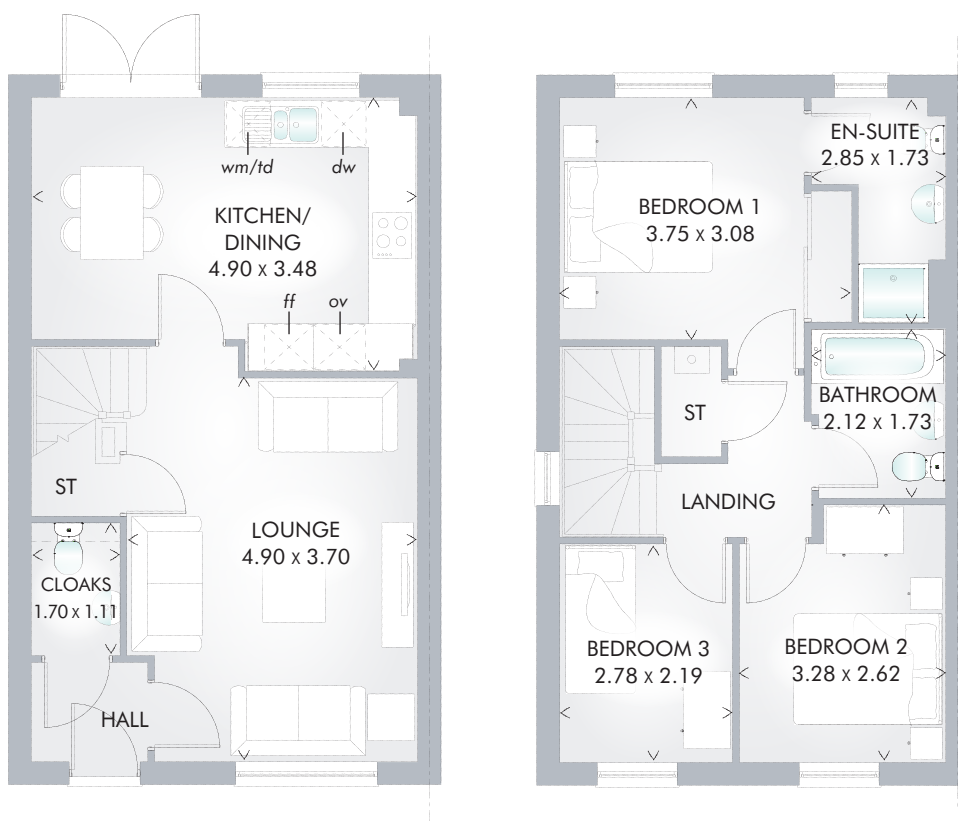
# BRUNSWICK

THREE BEDROOM HOME



 REDROW

# BRUNSWICK



## THREE BEDROOM HOME

The spacious end-terrace Brunswick uses smart design to find room for a surprising level of luxury. An en-suite bathroom to the master bedroom and downstairs cloaks, make it a generous family home with space for everyone.

### GROUND FLOOR

Lounge	16'1" x 12'2"	4.90 x 3.70 m
Kitchen/ Dining	16'1" x 11'5"	4.90 x 3.48 m
Cloaks	5'7" x 3'8"	1.70 x 1.11 m

### FIRST FLOOR

Bedroom 1	12'4" x 10'1"	3.75 x 3.08 m
En-suite	9'4" x 5'8"	2.85 x 1.73 m
Bedroom 2	10'9" x 8'7"	3.28 x 2.62 m
Bedroom 3	9'1" x 7'2"	2.78 x 2.19 m
Bathroom	6'11" x 5'8"	2.12 x 1.73 m

#### CONSUMER CODE FOR HOME BUILDERS

[www.consumercode.co.uk](http://www.consumercode.co.uk)

Customers should note this illustration is an example of the Brunswick house type. All dimensions indicated are approximate and furniture layout is for illustrative purposes only. Homes may be a 'handed' (mirror image) versions of the illustrations, and may be detached, semi-detached or terraced. Materials used may differ from plot to plot including render and roof tile colours. Detailed plans and specifications are available for inspection for each plot at our Sales Centre during working hours and customers must check their individual specifications prior to making reservation.

KEY Hob Oven Fridge/freezer Washing machine Dishwasher Tumble dryer Cupboard

< Denotes where dimensions are taken from. All wardrobes are subject to site specification. Please see Sales Consultant for further details.

Traditional homes, built the way you remember

