



BRUNSWICK GRAND

FOUR BEDROOM HOME



 REDROW



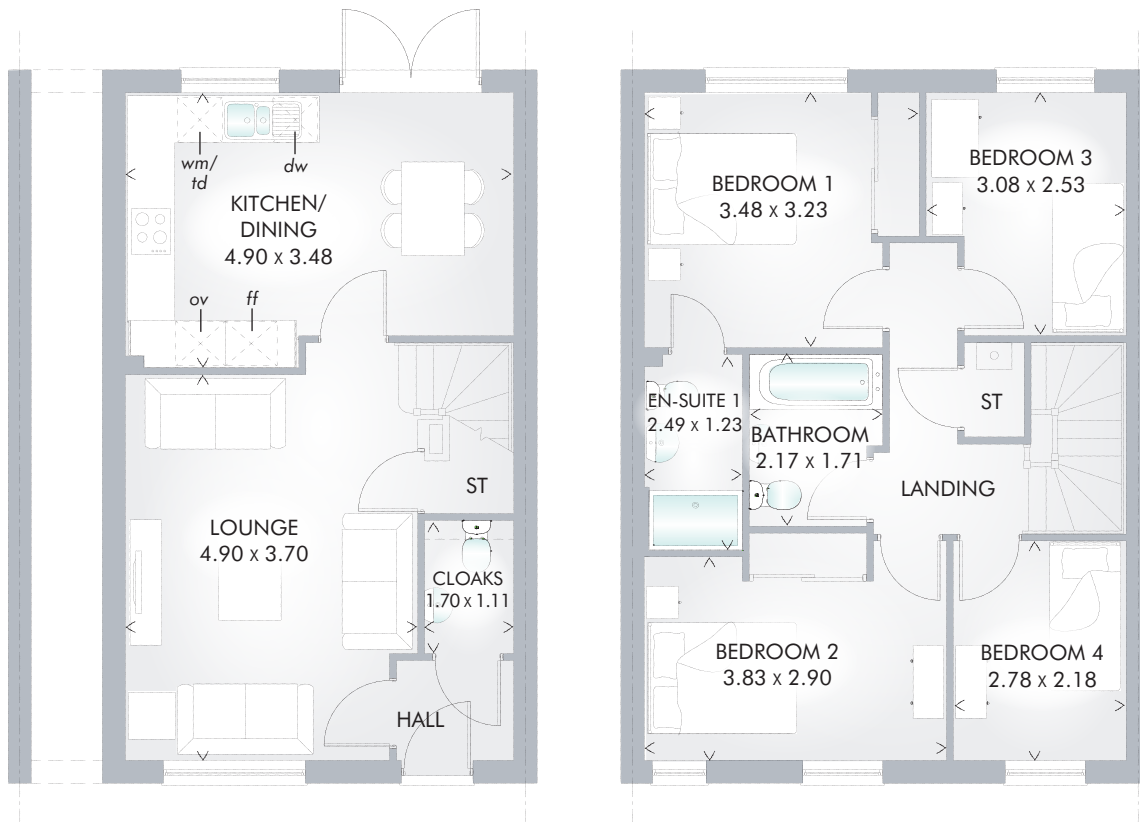
BRUNSWICK GRAND

FOUR BEDROOM HOME



 REDROW

BRUNSWICK GRAND



FOUR BEDROOM HOME

The spacious mid-terrace Brunswick Grand uses smart design to find room for a surprising level of luxury. An en-suite bathroom to the master bedroom and downstairs cloaks, make it a generous family home with space for everyone.

GROUND FLOOR

| | | |
|--------------------|---------------|---------------|
| Lounge | 16'1" x 12'2" | 4.90 x 3.70 m |
| Kitchen/ Dining | 16'1" x 11'5" | 4.90 x 3.48 m |
| Cloaks | 5'7" x 3'8" | 1.70 x 1.11 m |

FIRST FLOOR

| | | |
|-----------|---------------|---------------|
| Bedroom 1 | 11'5" x 10'7" | 3.48 x 3.23 m |
| En-suite | 8'2" x 4'0" | 2.49 x 1.23 m |
| Bedroom 2 | 12'7" x 9'6" | 3.83 x 2.90 m |
| Bedroom 3 | 10'1" x 8'4" | 3.08 x 2.53 m |
| Bedroom 4 | 9'1" x 7'2" | 2.78 x 2.18 m |
| Bathroom | 7'1" x 5'7" | 2.17 x 1.71 m |

CONSUMER CODE FOR HOME BUILDERS

www.consumercode.co.uk

Customers should note this illustration is an example of the Brunswick Grand house type. All dimensions indicated are approximate and furniture layout is for illustrative purposes only. Homes may be a 'handed' (mirror image) versions of the illustrations, and may be detached, semi-detached or terraced. Materials used may differ from plot to plot including render and roof tile colours. Detailed plans and specifications are available for inspection for each plot at our Sales Centre during working hours and customers must check their individual specifications prior to making reservation.

KEY Hob Oven Fridge/freezer Washing machine space dw Dishwasher td Tumble dryer ST Cupboard

< Denotes where dimensions are taken from. All wardrobes are subject to site specification. Please see Sales Consultant for further details.

Traditional homes, built the way you remember

REDROW
A BETTER WAY TO LIVE