



# Harrogate

*Lifestyle*

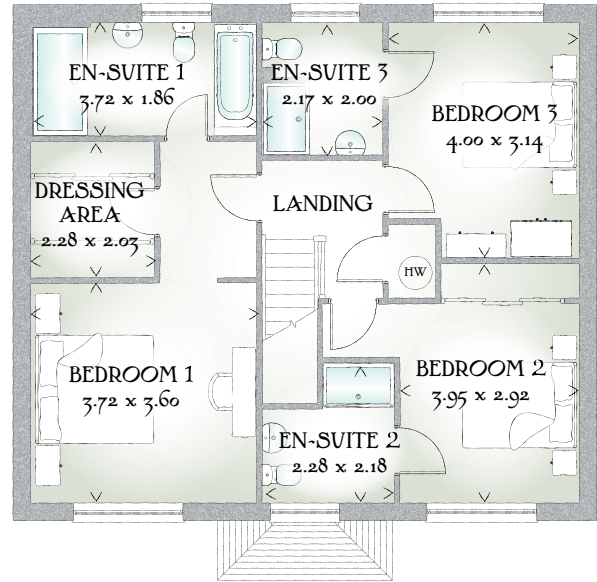
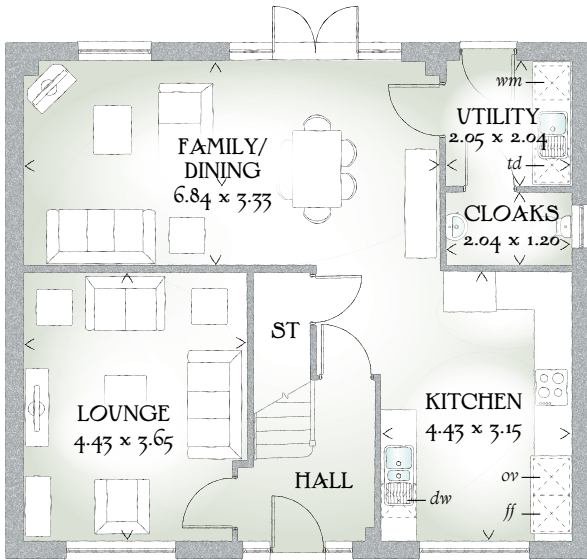
THREE BEDROOM HOME



 REDROW



# Harrogate Lifestyle



## THREE BEDROOM HOME

The Harrogate Lifestyle may look very traditional on the outside, however inside it's anything but, with a stunning specification that includes a magnificent master bedroom suite with a unique dressing area and two further double bedrooms each with their own en-suite bathroom.

### GROUND FLOOR

Lounge	14'6" x 12'0"	4.43 x 3.65 m
Kitchen	14'6" x 10'4"	4.43 x 3.15 m
Family/Dining	22'5" x 10'11"	6.84 x 3.33 m
Utility	6'9" x 6'8"	2.05 x 2.04 m
Cloaks	6'8" x 3'11"	2.04 x 1.20 m

### FIRST FLOOR

Bedroom 1	12'2" x 11'10"	3.72 x 3.60 m
Dressing Area	7'6" x 6'8"	2.28 x 2.03 m
En-suite 1	12'2" x 6'1"	3.72 x 1.86 m
Bedroom 2	13'0" x 9'7"	3.95 x 2.92 m
En-suite 2	7'6" x 7'2"	2.28 x 2.18 m
Bedroom 3	13'1" x 10'4"	4.00 x 3.14 m
En-suite 3	7'1" x 6'7"	2.17 x 2.00 m

#### CONSUMER CODE FOR HOME BUILDERS

[www.consumercode.co.uk](http://www.consumercode.co.uk)

Customers should note this illustration is an example of the Harrogate Lifestyle house type. All dimensions indicated are approximate and the furniture layout is for illustrative purposes only. Homes may be 'handed' (mirror image) versions of the illustrations, and may be detached, semi-detached or terraced. Materials used may differ from plot to plot including render and roof tile colours. Detailed plans and specifications are available for inspection for each plot at our Sales Centre during working hours and customers must check their individual specifications prior to making a reservation.

KEY Hob Oven Fridge/freezer Washing machine space Dishwasher space Tumble dryer space Hot water cylinder Cupboard

< Denotes where dimensions are taken from. All wardrobes are subject to site specification. Please see Sales Consultant for further details.

Traditional homes, built the way you remember

