

# ROUNDHAY

4 BEDROOM HOME  
SEMI - DETACHED



This beautiful three-floor, four-bedroom home will keep your entire family happy. Build priceless memories in the large lounge and kitchen-diner, sleep in late in the generously sized master bedroom with en-suite, and enjoy two full-sized bathrooms – Roundhay is the choice for those who want a little bit extra.

## GROUND FLOOR

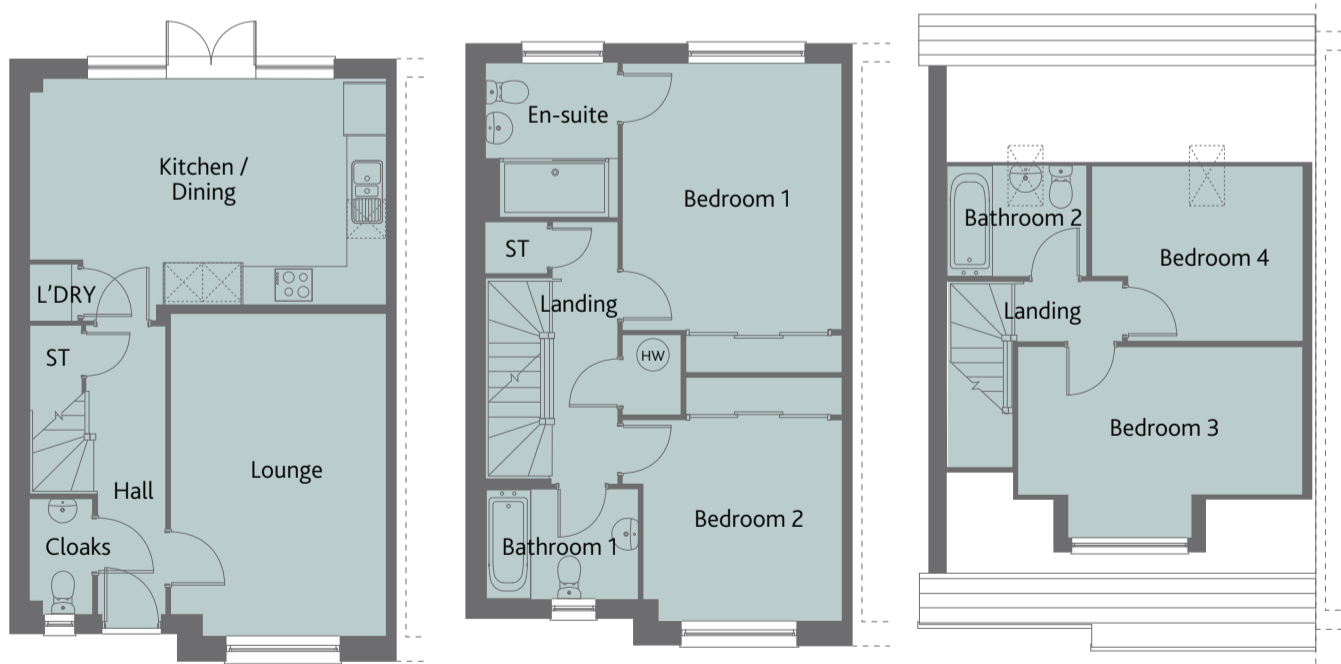
Lounge	15'5" x 11'0"	5.02 x 3.35 m
Kitchen/ Dining	18'3" x 11'7"	5.55 x 3.56 m
Cloaks	5'10" x 3'2"	1.79 x 0.98 m
Laundry	2'10" x 2'5"	0.87 x 0.75 m

## FIRST FLOOR

Bedroom 1	15'10" x 11'2"	4.82 x 3.42 m
En-suite	7'10" x 5'6"	2.40 x 2.05 m
Bedroom 2	12'5" x 10'1"	3.12 x 3.45 m
Bathroom 1	7'10" x 5'7"	2.38 x 1.71 m

## SECOND FLOOR

Bedroom 3	14'8" x 7'6"	4.47 x 2.28 m
Bedroom 4	10'10" x 8'10"	3.27 x 2.70 m
Bathroom 2	7'1" x 5'7"	2.15 x 1.71 m



## 4 BEDROOM HOME

Customers should note this illustration is an example of the Roundhay house type. All dimensions indicated are approximate and the furniture layout is for illustrative purposes only. Homes may be 'handed' (mirror image) versions of the illustrations, and may be detached, semi-detached or terraced. Materials used may differ from plot to plot including render and roof tile colours. Detailed plans and specifications are available for inspection for each plot at our Sales Centre during working hours and customers must check their individual specifications prior to making a reservation.

KEY Hob Hot water cylinder ST Cupboard Velux windows  
Note: Bedroom dimensions taken into wardrobe recess. All wardrobes are subject to site specification. Please see Sales Consultant for further details.

