

956



Visit: [redrow.co.uk/abode](http://redrow.co.uk/abode)



956



Visit: [redrow.co.uk/abode](http://redrow.co.uk/abode)

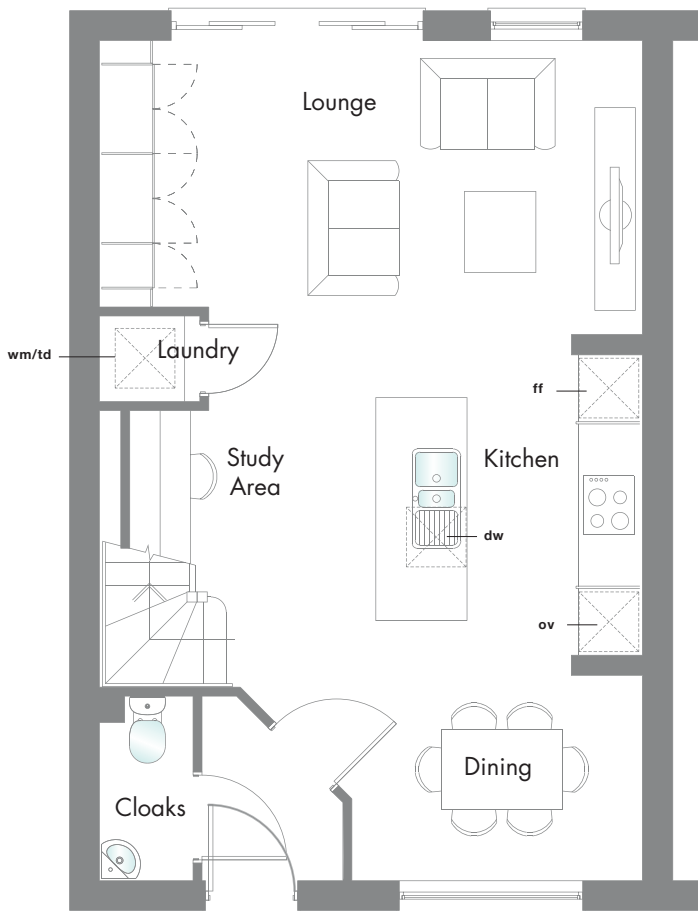


# 956<sup>SQ.FT</sup>

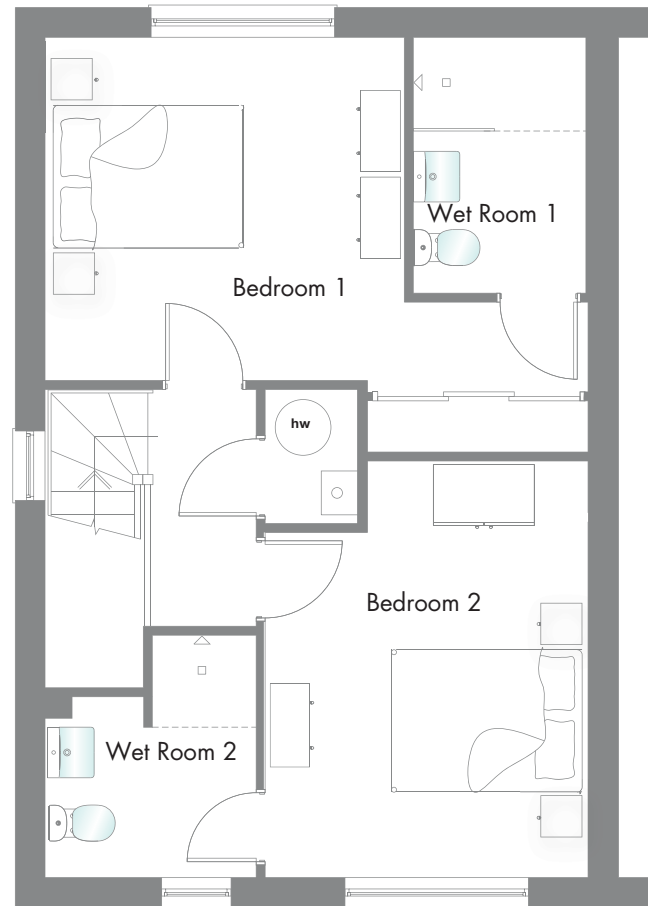
## 2 BEDROOM HOME

Filled with light which floods the living area, the Abode 956 has a fresh, fun approach that's in tune with the way you want to live.

### GROUND FLOOR



### FIRST FLOOR



# G

Lounge	17'5" x 9'5"	5.31 x 2.88 m*
Kitchen	11'4" x 11'0"	3.45 x 3.36 m
Study Area	5'11" x 5'2"	1.80 x 1.58 m*
Dining	9'4" x 6'7"	2.84 x 2.00 m
Cloaks	5'11" x 2'11"	1.80 x 0.90 m
Laundry	3'2" x 2'9"	0.97 x 0.85 m

# F

Bedroom 1	17'5" x 13'4"	5.31 x 4.07 m*
Wet Room 1	8'2" x 5'7"	2.50 x 1.70m
Bedroom 2	13'5" x 10'4"	4.09 x 3.16 m*
Wet Room 2	7'9" x 6'9"	2.37 x 2.06 m*

Hob Oven Fridge/Freezer Washing machine/Tumble Dryer  
 space Dishwasher space Optional wardrobe Hot Water Cylinder  
 \*Max dimensions Note: Bedroom dimensions taken into wardrobe recess

Customers should note this illustration is an example of The Abode 956 housetype. All dimensions indicated are approximate and furniture layout is for illustrative purposes only. Homes may be a 'handed' (mirror image) versions of the illustrations, and may be detached, semi-detached or terraced. Materials used may differ from plot to plot including render and roof tile colours. Detailed plans and specifications are available for inspection for each plot at our Marketing Suite during working hours and customers must check their individual specifications prior to making reservation.