

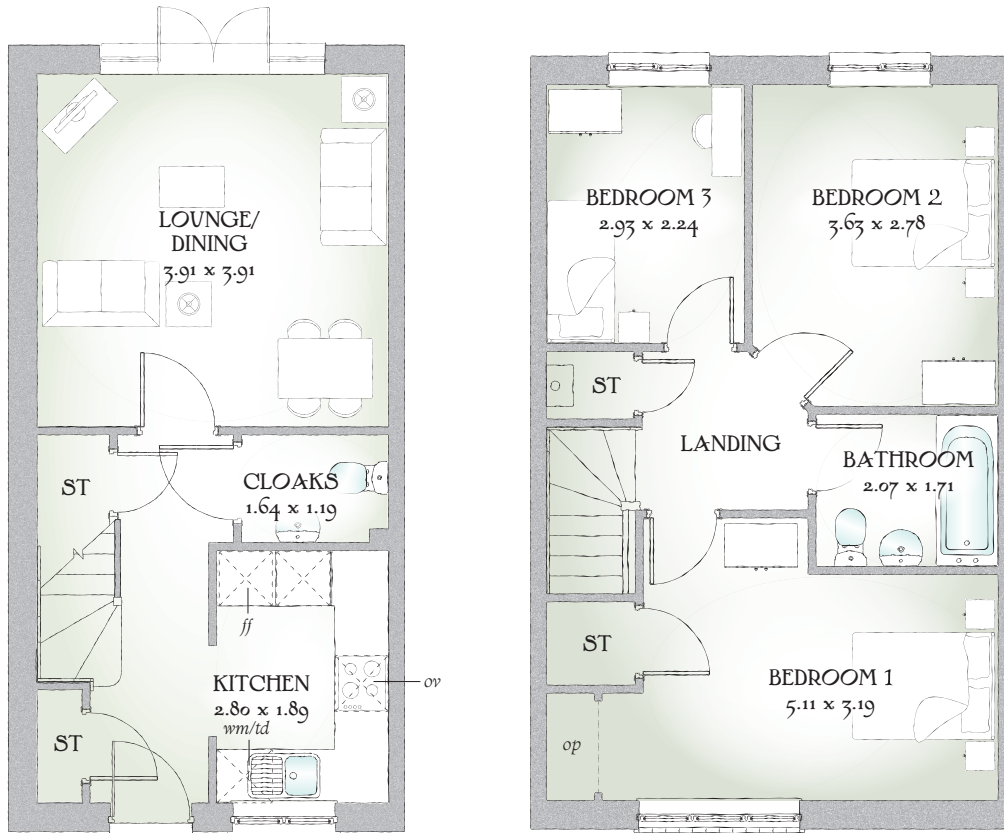


Avon³

THREE BEDROOM HOME



 REDROW



THREE BEDROOM HOME

The Avon is three bedroom living at its best for the smaller family, providing two generous double bedrooms, a good sized third bedroom and a family bathroom above a large lounge/dining room and fully fitted kitchen.

GROUND FLOOR

| | | |
|-------------------|-----------------|---------------|
| Lounge/ Dining | 12'10" x 12'10" | 3.91 x 3.91 m |
| Kitchen | 9'2" x 6'2" | 2.80 x 1.89 m |
| Cloaks | 5'5" x 3'11" | 1.64 x 1.19 m |

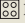
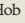
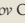

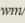
FIRST FLOOR

| | | |
|-----------|---------------|---------------|
| Bedroom 1 | 16'9" x 10'6" | 5.11 x 3.19 m |
| Bedroom 2 | 11'11" x 9'1" | 3.63 x 2.78 m |
| Bedroom 3 | 9'7" x 7'4" | 2.93 x 2.24 m |
| Bathroom | 6'9" x 5'7" | 2.07 x 1.71 m |

CONSUMER CODE FOR HOME BUILDERS

www.consumercode.co.uk

Customers should note this illustration is an example of the Avon³ house type. All dimensions indicated are approximate and furniture layout is for illustrative purposes only. Homes may be 'handed' (mirror image) versions of the illustrations, and may be detached, semi-detached or terraced. Materials used may differ from plot to plot including render and roof tile colours. Detailed plans and specifications are available for inspection for each plot at our Sales Centre during working hours and customers must check their individual specifications prior to making a reservation.

KEY  Hob  Oven  Fridge/freezer  Wm/d Washer/dryer space
ST Cupboard  Optional wardrobe position
Note: Bedroom dimensions taken into wardrobe recess. All wardrobes are subject to site specification. Please see Sales Consultant for further details.

Traditional homes, built the way you remember



REDROW
A BETTER WAY TO LIVE