



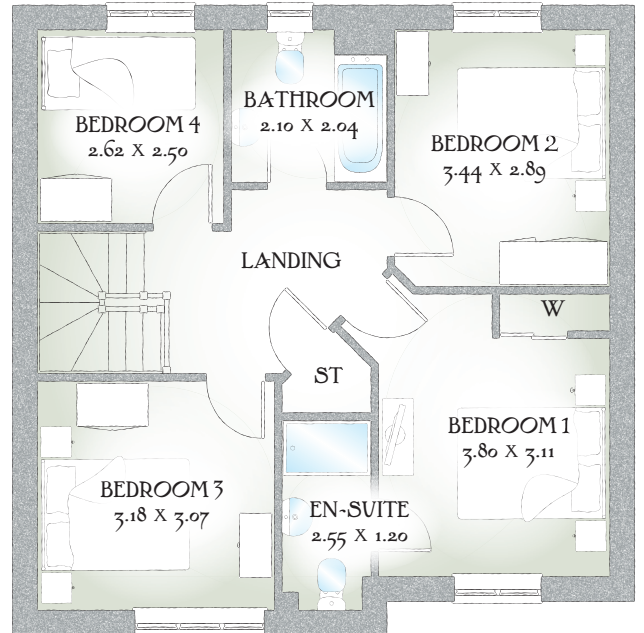
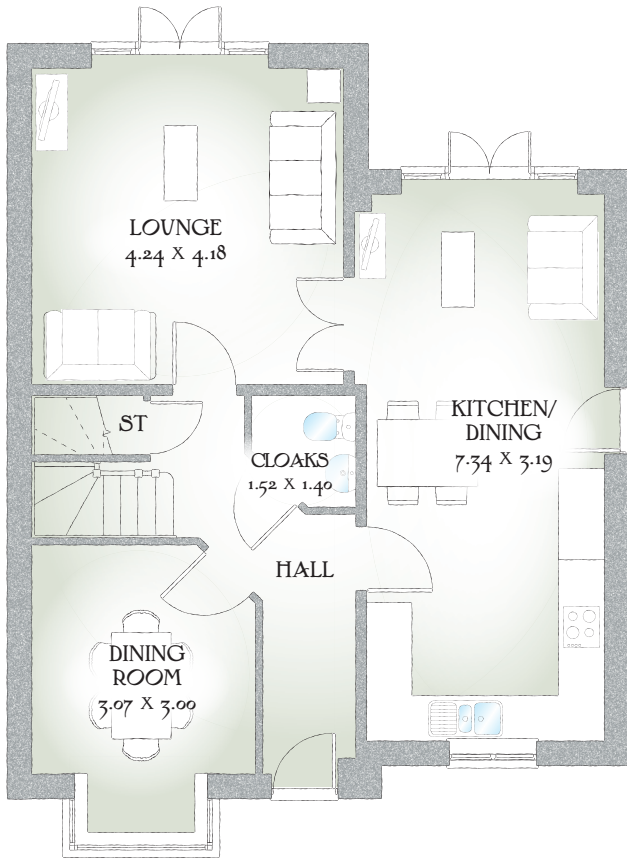
# Birchover

FOUR BEDROOM HOME





# Birchover



## FOUR BEDROOM HOME

This stunning 4 bedroom family home has a spacious interior with a central hallway leading on one side to the generous kitchen and family area which has access, via french doors to the rear garden.

### GROUND FLOOR

Lounge	13'10" x 13'8"	4.24 x 4.18m
Kitchen/ Family/ Breakfast	24'1" x 10'5"	7.34 x 3.19m
Dining	10'0" x 9'10"	3.07 x 3.00m
Cloaks	4'7" x 4'11"	1.40 x 1.50m

### FIRST FLOOR

Bedroom 1	12'5" x 10'2"	3.80 x 3.11m
En-suite	8'4" x 3'11"	2.55 x 1.20m
Bedroom 2	11'3" x 9'5"	3.44 x 2.89m
Bedroom 3	10'5" x 10'0"	3.18 x 3.07m
Bedroom 4	8'7" x 8'2"	2.62 x 2.50m
Bathroom	6'10" x 6'8"	2.10 x 2.04m

Customers should note this illustration is an example of The Birchover house type. All dimensions indicated are approximate and the furniture layout is for illustrative purposes only. Homes may be 'handed' (mirror image) versions of the illustrations, and may be detached, semi-detached or terraced. Materials used may differ from plot to plot including render and roof tile colours. Detailed plans and specifications are available for inspection for each plot at our Sales Centre during working hours and customers must check their individual specifications prior to making a reservation.

KEY Hob ST Cupboard W Wardrobe

\*Max dimensions Note: Bedroom dimensions taken into wardrobe recess. All wardrobes are subject to site specification. Please see Sales Consultant for further details.

Traditional homes, built the way you remember

 **REDROW**  
A BETTER WAY TO LIVE