



# Bournemouth

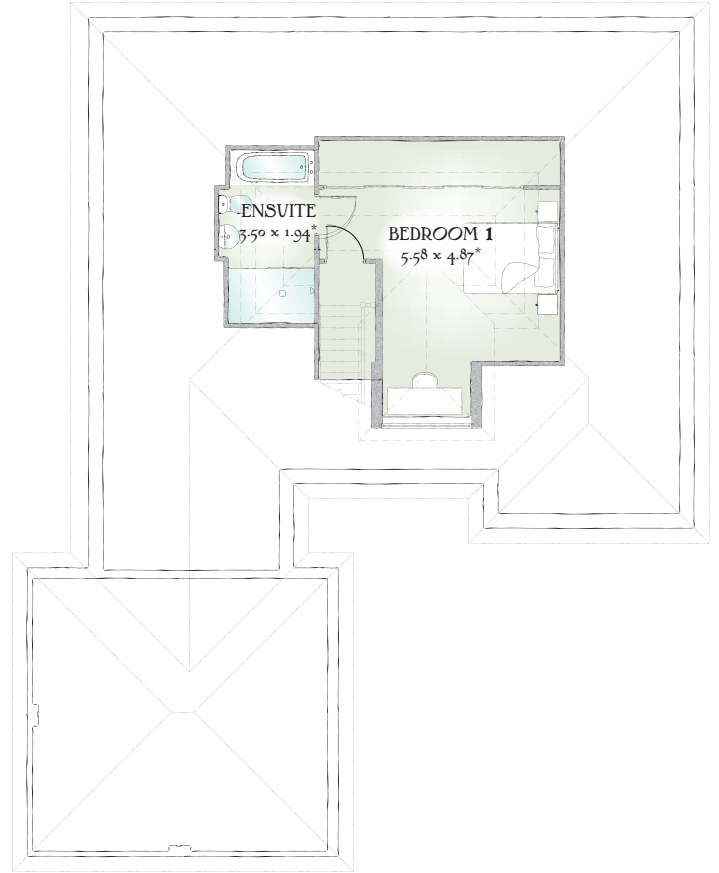
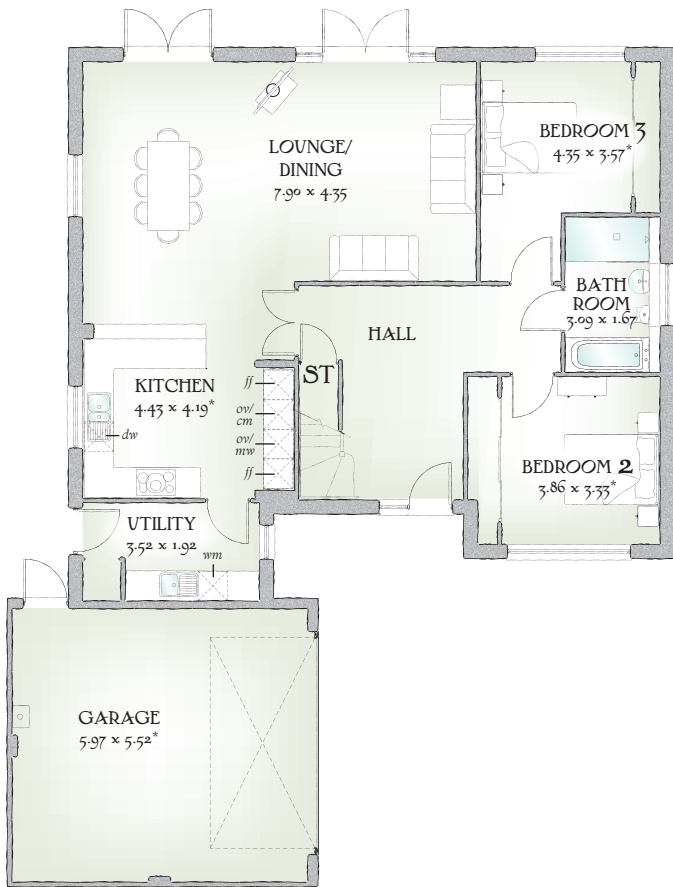
THREE BEDROOM HOME



 REDROW



# Bournemouth



1554 SQ FT | THREE BEDROOM HOME

The Bournemouth dormer offers a remarkable amount of room, a flexible way of living and something for everyone, that all walks of life can enjoy.

## GROUND FLOOR

Lounge/ Dining	25'11" x 14'3"	7.90 x 4.35 m
Kitchen	14'6" x 13'9"	4.43 x 4.19 m*
Bedroom 2	12'8" x 10'11"	3.86 x 3.33 m*
Bedroom 3	14'3" x 11'9"	4.35 x 3.57 m*
Bathroom	10'1" x 5'6"	3.09 x 1.67 m
Utility	11'7" x 6'4"	3.52 x 1.92 m
Garage	19'7" x 18'1"	5.97 x 5.52 m*

## FIRST FLOOR

Bedroom 1	18'4" x 16'0"	5.58 x 4.87 m*
En-suite	11'6" x 6'4"	3.50 x 1.94 m*

Customers should note this illustration is an example of The Bournemouth house type. All dimensions indicated are approximate and furniture layout is for illustrative purposes only. Homes may be a 'handed' (mirror image) versions of the illustrations, and may be detached, semi-detached or terraced. Materials used may differ from plot to plot including render and roof tile colours. Detailed plans and specifications are available for inspection for each plot at our Sales Centre during working hours and customers must check their individual specifications prior to making reservation.

KEY Hob *ov* Oven *ff* Fridge/freezer *wm* Washing machine space *dw* Dishwasher space *mww* Microwave space *cm* Coffee machine  
\* Max dimensions Note: Bedroom dimensions taken into wardrobe recess. All wardrobes are subject to site specification. Please see Sales Consultant for further details.

Traditional homes, built the way you remember

