

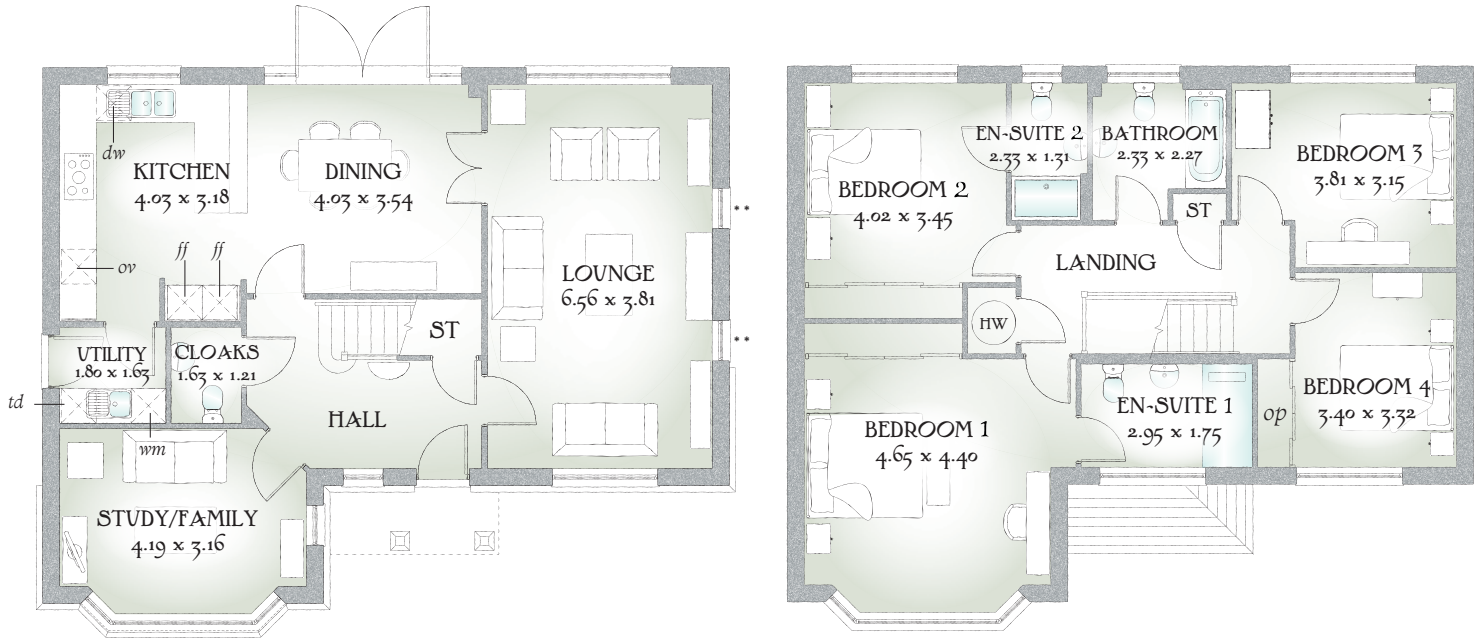


# Balmoral

FOUR BEDROOM HOME



 REDROW



## FOUR BEDROOM HOME

Arriving at the portico covered entrance, rich in the design details of a bygone age of craftsmanship and quality. Yet it remains as contemporary today as it would have been at the peak of the arts and crafts movement that inspired its design.

### GROUND FLOOR

Lounge	21'6" x 12'6"	6.56 x 3.81 m
Kitchen	13'3" x 10'5"	4.03 x 3.18 m
Dining	13'3" x 11'7"	4.03 x 3.54 m
Study/ Family	13'9" x 10'4"	4.19 x 3.16 m
Cloaks	5'4" x 4'10"	1.63 x 1.21 m
Utility	5'11" x 5'4"	1.80 x 1.63 m

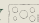
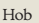
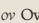
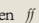
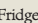
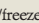

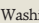
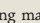
### FIRST FLOOR

Bedroom 1	15'3" x 14'5"	4.65 x 4.40 m
En-suite 1	9'8" x 5'9"	2.95 x 1.75 m
Bedroom 2	13'2" x 11'4"	4.02 x 3.45 m
En-suite 2	7'8" x 4'4"	2.33 x 1.31 m
Bedroom 3	12'6" x 10'4"	3.81 x 3.15 m
Bedroom 4	11'2" x 10'11"	3.40 x 3.32 m
Bathroom	7'8" x 7'5"	2.33 x 2.27 m

#### CONSUMER CODE FOR HOME BUILDERS

[www.consumercode.co.uk](http://www.consumercode.co.uk)

Customers should note this illustration is an example of The Balmoral house type. All dimensions indicated are approximate and furniture layout is for illustrative purposes only. Homes may be 'handed' (mirror image) versions of the illustrations, and may be detached, semi-detached or terraced. Materials used may differ from plot to plot including render and roof tile colours. Detailed plans and specifications are available for inspection for each plot at our Sales Centre during working hours and customers must check their individual specifications prior to making a reservation.

KEY  Hob  Oven  Fridge/freezer  Washing machine space  Dishwasher space  Tumble dryer space  Hot water cylinder  Cupboard  Optional wardrobe

\*Max dimensions Note: Bedroom dimensions taken into wardrobe recess. All wardrobes are subject to site specification. Please see Sales Consultant for further details.

Redrow.co.uk give notice that the property particulars and related information on this site, whilst believed to be accurate, are set as a general outline for guidance only. Intending purchasers should not rely on them as statements or representations of fact, but must satisfy themselves before physical inspection as to their availability, or by physical inspection of the property in question or otherwise as to their accuracy or fit for purpose. Consequently, no information displayed on this site (or linked sites) constitutes or forms part of a contract. Materials used may differ from plot to plot including render and roof tile colours.

Traditional homes, built the way you remember