



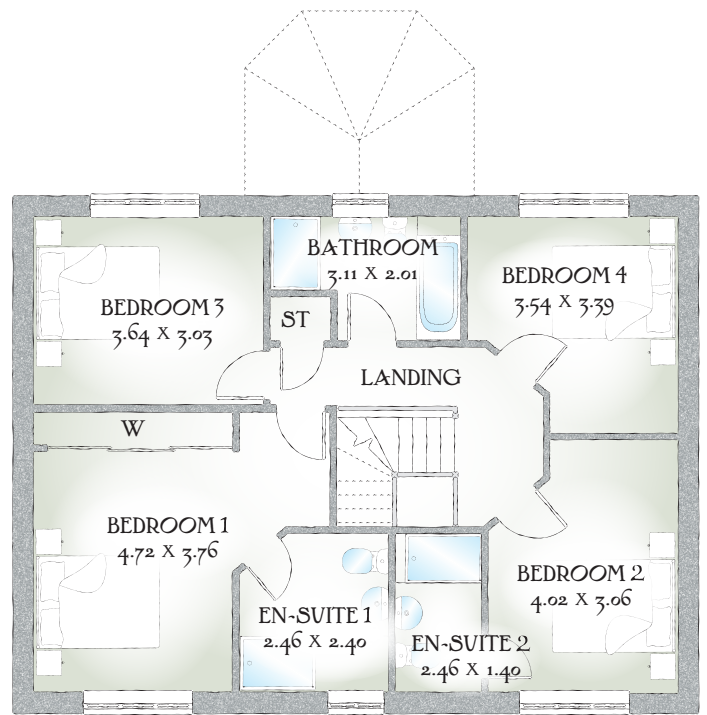
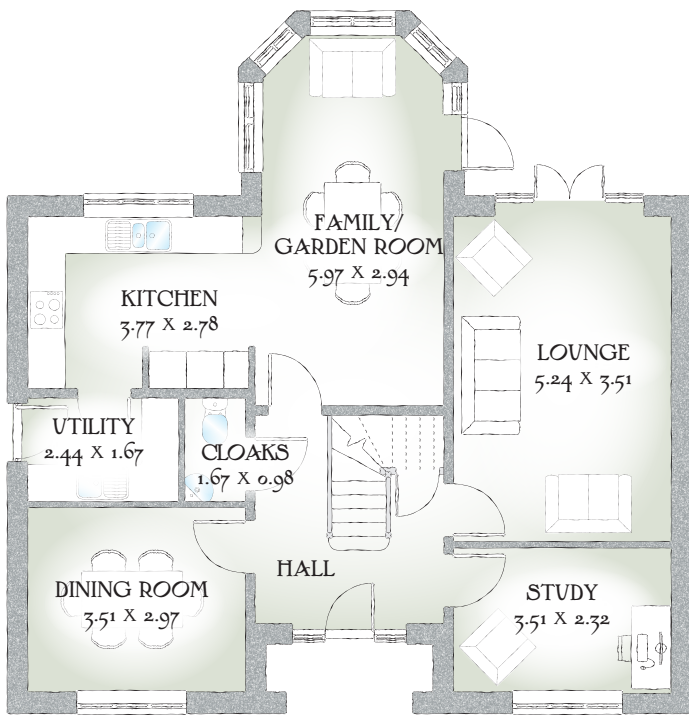
Carsington

FOUR BEDROOM HOME



 REDROW

Carsington



FOUR BEDROOM HOME

The bold design and spacious well planned interior of this house makes it a fabulous family home, with generously proportioned accommodation and the nostalgia of a traditional porch.

GROUND FLOOR

Lounge	17'2" x 11'6"	5.24 x 3.51m
Dining Room	11'6" x 9'9"	3.51 x 2.97m
Kitchen	12'4" x 9'1"	3.77 x 2.78m*
Family/ Garden Room	19'6" x 9'7"	5.97 x 2.94m*
Study	11'6" x 7'7"	3.51 x 2.32m
Utility	7'11" x 5'5"	2.44 x 1.67m
Cloaks	5'5" x 3'2"	1.67 x 0.98m

FIRST FLOOR

Bedroom 1	15'5" x 12'4"	4.72 x 3.76m*
En-suite 1	8'0" x 7'10"	2.46 x 2.40m*
Bedroom 2	13'2" x 10'0"	4.02 x 3.06m*
En-suite 2	8'0" x 4'7"	2.46 x 1.40m*
Bedroom 3	11'11" x 9'11"	3.64 x 3.03m*
Bedroom 4	11'7" x 11'1"	3.54 x 3.39m*
Bathroom	10'2" x 6'7"	3.11 x 2.01m*

Customers should note this illustration is an example of The Carsington house type. All dimensions indicated are approximate and the furniture layout is for illustrative purposes only. Homes may be 'handed' (mirror image) versions of the illustrations, and may be detached, semi-detached or terraced. Materials used may differ from plot to plot including render and roof tile colours. Detailed plans and specifications are available for inspection for each plot at our Sales Centre during working hours and customers must check their individual specifications prior to making a reservation.

KEY Hob ST Cupboard W Wardrobe

*Max dimensions Note: Bedroom dimensions taken into wardrobe recess. All wardrobes are subject to site specification. Please see Sales Consultant for further details.

Traditional homes, built the way you remember

 **REDROW**
A BETTER WAY TO LIVE