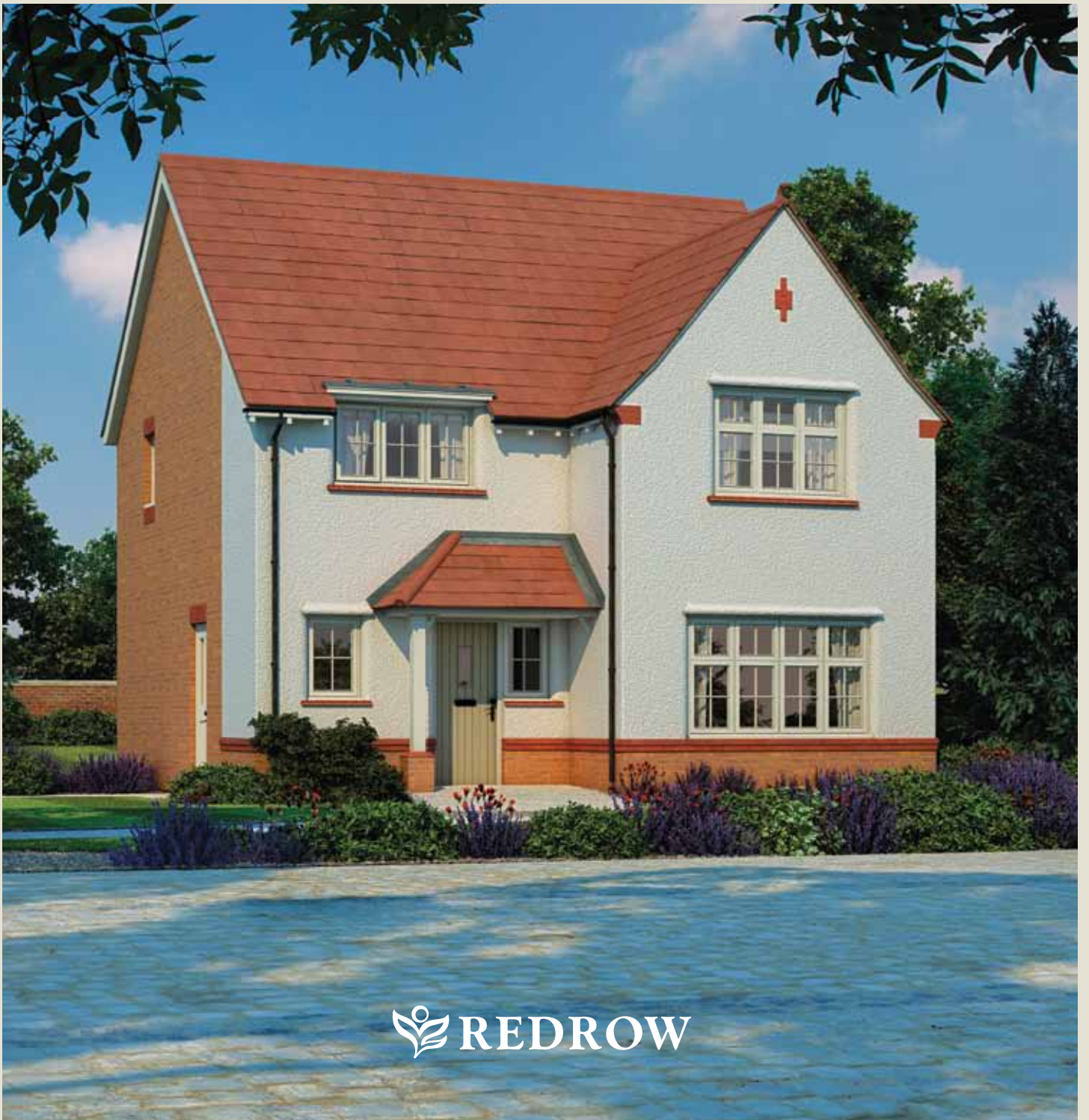




Cambridge

FOUR BEDROOM HOME



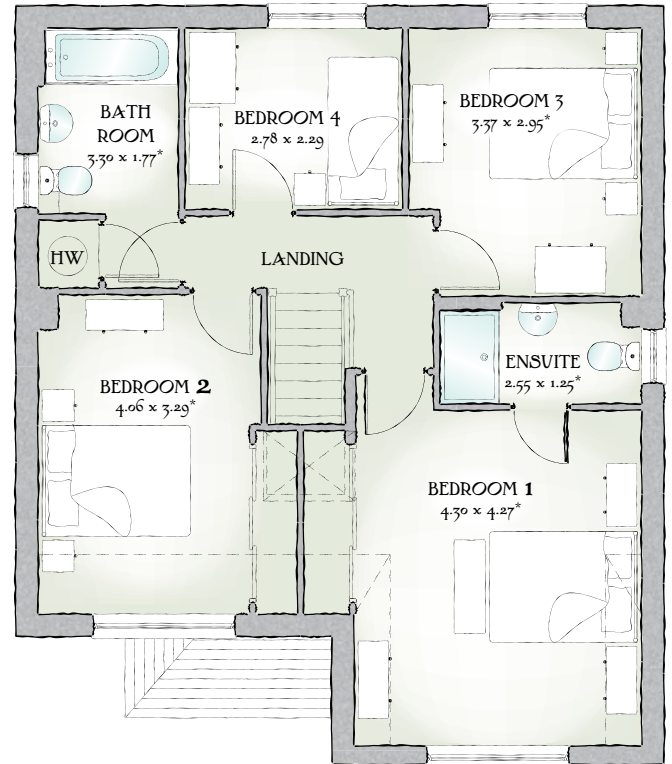
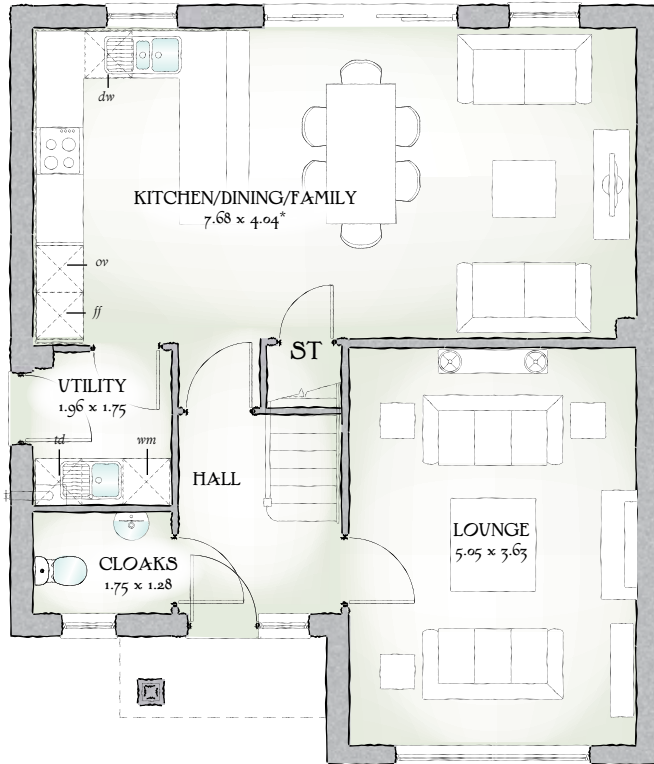
 REDROW



Cambridge

FOUR BEDROOM HOME





1382 SQ FT | FOUR BEDROOM HOME

It's clear from the first glance that The Cambridge has been designed for the dynamics of family life, by an architect who understands the fine balance between time together and personal space.

GROUND FLOOR


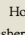
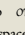
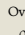
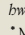
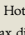
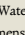
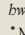
Lounge	16'7" x 11'11"	5.05 x 3.63 m
Kitchen/ Dining/ Family	25'2" x 13'3"	7.68 x 4.04m*
Utility	6'5" x 5'9"	1.96 x 1.75 m
Cloaks	5'9" x 4'2"	1.75 x 1.28 m

FIRST FLOOR

Bedroom 1	14'1" x 14'0"	4.30 x 4.27 m*
EnSuite	8'4" x 4'1"	2.55 x 1.25 m*
Bedroom 2	13'4" x 10'10"	4.06 x 3.29 m*
Bedroom 3	11'1" x 9'8"	3.37 x 2.95 m*
Bedroom 4	9'1" x 7'6"	2.78 x 2.29 m
Bathroom	10'10" x 5'10"	3.30 x 1.77 m*

Customers should note this illustration is an example of The Cambridge housetype. All dimensions indicated are approximate and furniture layout is for illustrative purposes only. Homes may be 'handed' (mirror image) versions of the illustrations, and may be detached, semi-detached or terraced. Materials used may differ from plot to plot including render and roof tile colours. Detailed plans and specifications are available for inspection for each plot at our Marketing Suite during working hours and customers must check their individual specifications prior to making reservation.

** All wardrobes are subject to site specification. Please see Sales Consultant for further details.

KEY  Hob  Oven  Fridge/freezer  Washing machine space  Dishwasher space  Optional wardrobe**  Tumble dryer space  Hot Water Cylinder

*Max dimensions Note: Bedroom dimensions taken into wardrobe recess

Traditional homes, built the way you remember



REDROW
OUR PRIDE~YOUR JOY