

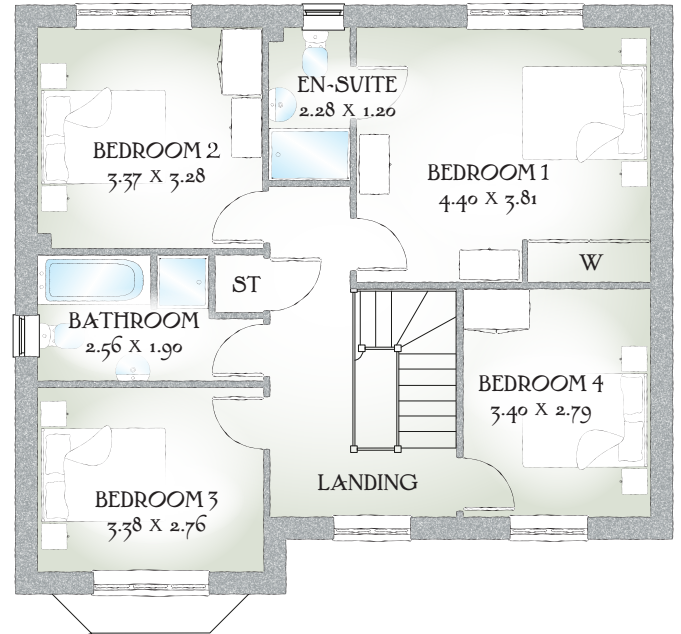
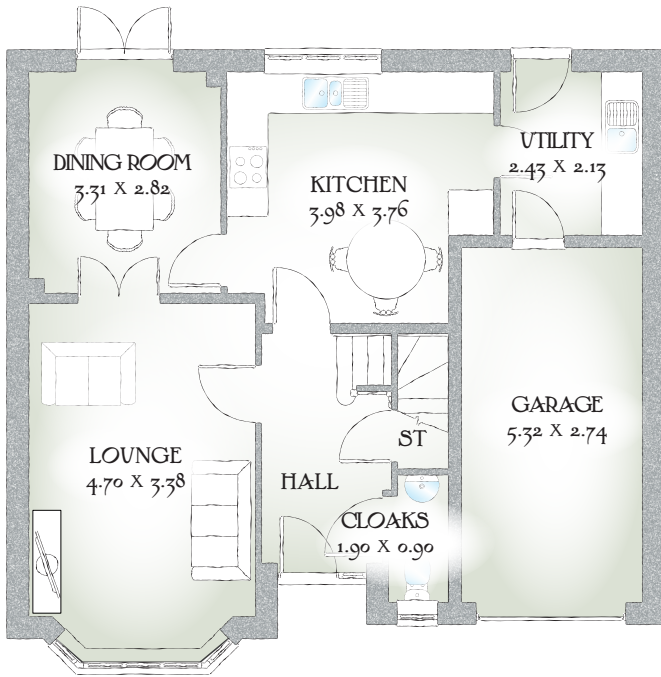


# Draycott

FOUR BEDROOM HOME



# Draycott



## FOUR BEDROOM HOME

The Draycott is an ideal choice for families looking for a spacious and flexible layout in their new home with useful access to an integral garage.

### GROUND FLOOR

Lounge	15'5" x 11'1"	4.70 x 3.38m
Dining Room	10'10" x 9'3"	3.31 x 2.82m
Kitchen	13'0" x 12'3"	3.98 x 3.76m
Utility	7'11" x 6'11"	2.43 x 2.13m
Cloaks	6'2" x 2'11"	1.90 x 0.90m
Garage	17'5" x 8'11"	5.32 x 2.74m

### FIRST FLOOR

Bedroom 1	14'5" x 12'6"	4.40 x 3.81m
En-suite 1	7'5" x 3'11"	2.28 x 1.20m
Bedroom 2	11'0" x 10'9"	3.37 x 3.28m
Bedroom 3	11'1" x 9'0"	3.38 x 2.76m
Bedroom 4	11'1" x 9'2"	3.40 x 2.79m
Bathroom	8'4" x 6'2"	2.56 x 1.90m

Customers should note this illustration is an example of The Draycott house type. All dimensions indicated are approximate and the furniture layout is for illustrative purposes only. Homes may be 'handed' (mirror image) versions of the illustrations, and may be detached, semi-detached or terraced. Materials used may differ from plot to plot including render and roof tile colours. Detailed plans and specifications are available for inspection for each plot at our Sales Centre during working hours and customers must check their individual specifications prior to making a reservation.

KEY Hob ST Cupboard W Wardrobe

\*Max dimensions Note: Bedroom dimensions taken into wardrobe recess. All wardrobes are subject to site specification. Please see Sales Consultant for further details.

Traditional homes, built the way you remember

 **REDROW**  
A BETTER WAY TO LIVE