

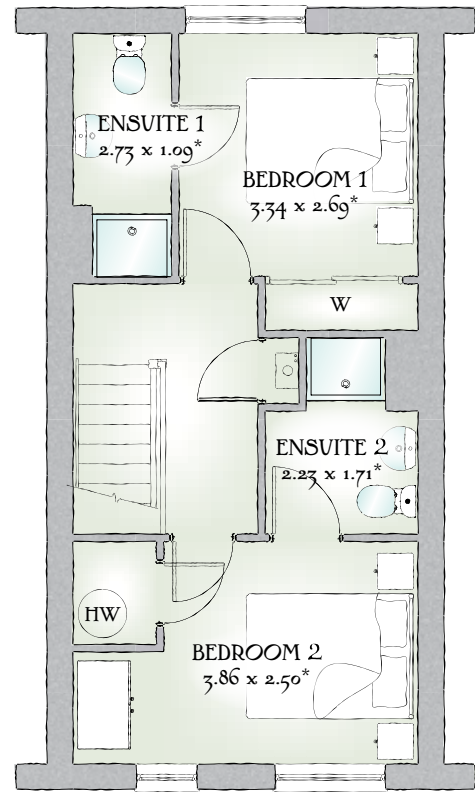
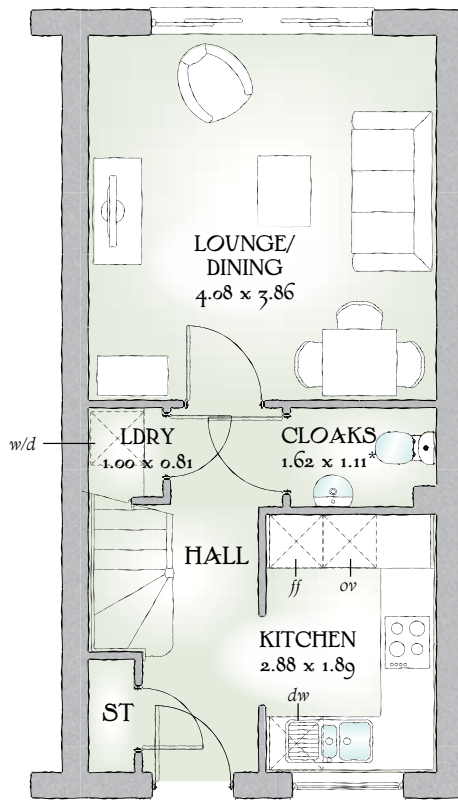


# Evesham

TWO BEDROOM HOME



 REDROW



## TWO BEDROOM HOME

Proving that quality and craftsmanship are not exclusive to expensive properties, The Evesham embodies the essence of the Heritage Collection, this simple yet spacious two bedroom home has a flow you'll feel immediately at ease with.

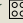
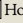
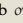
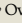
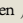
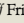
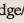
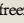
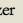
### GROUND FLOOR

Lounge/ Dining	13'5" x 12'8"	4.08 x 3.86 m
Kitchen	9'5" x 6'2"	2.88 x 1.89 m
Cloaks	5'4" x 3'8"	1.62 x 1.11 m*
Laundry	3'3" x 2'8"	1.00 x 0.81 m

### FIRST FLOOR

Bedroom 1	10'11" x 8'10"	3.34 x 2.69 m*
En-suite 1	8'11" x 3'7"	2.73 x 1.09 m*
Bedroom 2	12'8" x 8'2"	3.86 x 2.50 m*
En-suite 2	7'4" x 5'7"	2.23 x 1.71 m*

Customers should note this illustration is an example of The Evesham house type. All dimensions indicated are approximate and furniture layout is for illustrative purposes only. Homes may be 'handed' (mirror image) versions of the illustrations, and may be detached, semi-detached or terraced. Materials used may differ from plot to plot including render and roof tile colours. Detailed plans and specifications are available for inspection for each plot at our Sales Centre during working hours and customers must check their individual specifications prior to making a reservation.

KEY  Hob  Oven  Fridge/freezer  Washing machine space  Dishwasher space  Tumble dryer space  Hot water cylinder  ST Cupboard  W Wardrobe

\* Max dimensions Note: Bedroom dimensions taken into wardrobe recess. All wardrobes are subject to site specification. Please see Sales Consultant for further details.

Traditional homes, built the way you remember