



# Hadleigh

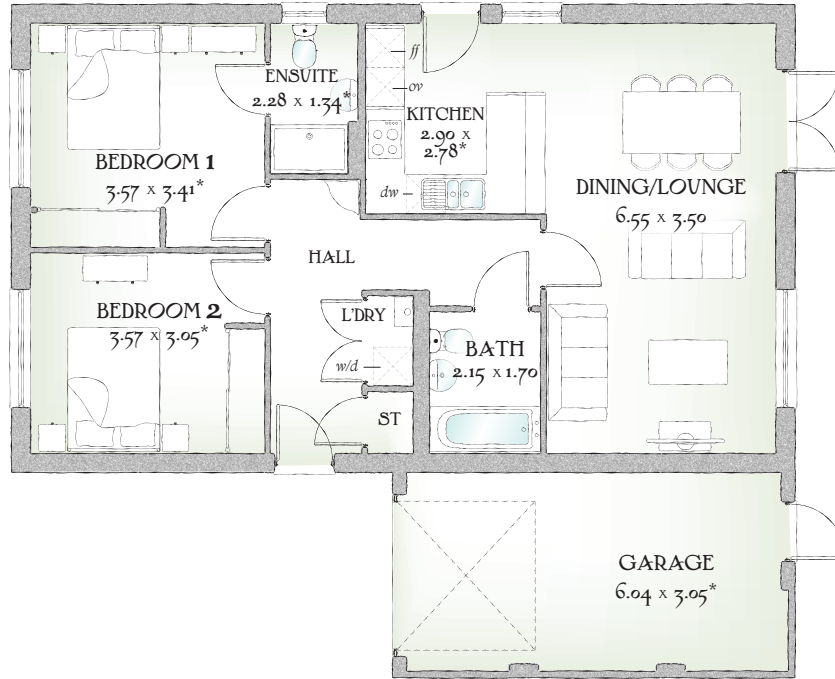
TWO BEDROOM HOME



 REDROW



# Hadleigh



813 SQ FT - TWO BEDROOM HOME

The open plan design of The Hadleigh makes the most of the space, yet keeps it compact and easy to manage. With a combined living / dining / kitchen area forming the heart of your home, and the luxury of an en suite master bedroom.

## GROUND FLOOR

Dining/ Lounge	21'6" x 11'6"	6.55 m x 3.50 m
Kitchen	9'6" x 9'1"	2.90 m x 2.78 m*
Bedroom 1	11'9" x 11'2"	3.57 m x 3.41 m*
EnSuite	7'6" x 4'5"	2.28 m x 1.34 m*

Bedroom 2	11'9" x 10'0"	3.57 m x 3.05 m*
Bathroom	7'1" x 5'7"	2.15 m x 1.70 m
Garage	19'10" x 10'0"	6.04 m x 3.05 m*

Customers should note this illustration is an example of The Hadleigh housetype. All dimensions indicated are approximate and the furniture layout is for illustrative purposes only. Homes may be a 'handed' (mirror image) versions of the illustrations, and may be detached, semi-detached or terraced. Materials used may differ from plot to plot including render and roof tile colours. Detailed plans and specifications are available for inspection for each plot at our Marketing Suite during working hours and customers must check their individual specifications prior to making a reservation.

KEY Hob Oven Fridge freezer dw Dishwasher space w/d Washer/Dryer space

\*Max dimensions Note: Bedroom dimensions taken into wardrobe recess. All wardrobes are subject to site specification. Please see Sales Consultant for further details.

Traditional homes, built the way you remember

