

The HARROGATE

FOUR BEDROOM HOME

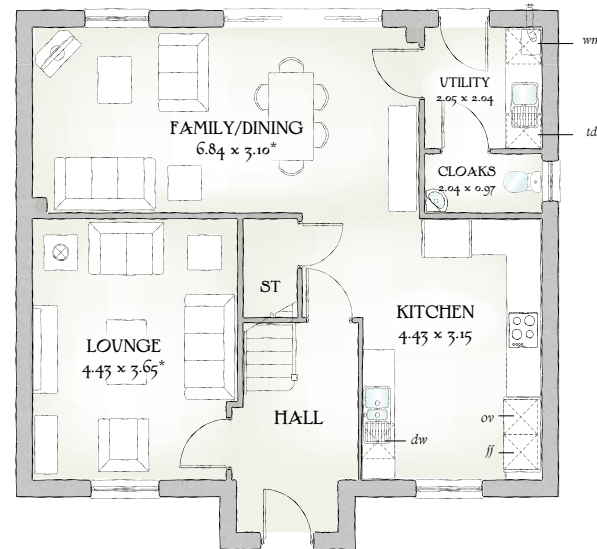


PLOTS 2,3+41 | 1531 SQ FT

The unique design of the doorway tells you just how much effort has gone into the creation of The Harrogate by craftsmen who care. It's touches like these that make your house into a home, transforming the ordinary into the extraordinary.

Customers should note this illustration is an example of the housetype. All dimensions indicated are approximate and furniture layout is for illustrative purposes only. Homes may be 'handed' (mirror image) versions of the illustrations, and may be detached, semi-detached or terraced. Materials used may differ from plot to plot including render and roof tile colours. Detailed plans and specifications are available for inspection for each plot at our Marketing Suite during working hours and customers must check their individual specifications prior to making reservation.** All wardrobes are subject to site specification. Please see Sales Consultant for further details.

Redrow.co.uk give notice that the property particulars and related information on this site, whilst believed to be accurate, are set as a general outline for guidance only. Intending purchasers should not rely on them as statements or representations of fact, but must satisfy themselves before physical inspection as to their availability, or by physical inspection of the property in question or otherwise as to their accuracy or fit for purpose. Consequently, no information displayed on this site (or linked sites) constitutes or forms part of a contract. Materials used may differ from plot to plot including render and roof tile colours.



GROUND FLOOR

Room	Dimensions (ft)	Dimensions (m)
Lounge	14'6" x 12'0"	4.43 x 3.65 m'
Kitchen	14'6" x 10'4"	4.43 x 3.15 m'
Family/Dining	22'5" x 10'2"	6.84 x 3.10 m'
Utility	6'9" x 6'8"	2.05 x 2.04 m'
Cloaks	6'8" x 3'2"	2.04 x 0.97 m'



FIRST FLOOR

Room	Dimensions (ft)	Dimensions (m)
Bedroom 1	12'2" x 10'2"	3.72 x 3.09 m'
EnSuite	7'3" x 5'5"	2.20 x 1.65 m'
Bedroom 2	12'10" x 10'4"	3.90 x 3.14 m'
Bedroom 3	12'1" x 10'4"	3.69 x 3.14 m'
Bedroom 4	10'2" x 9'1"	3.10 x 2.76 m'
Bathroom	8'7" x 5'8"	2.61 x 1.73 m'

KEY Hob ov Oven ff Fridge/freezer wm Washing machine space dw Dishwasher space op Optional wardrobe** td Tumble dryer space bw Hot Water Cylinder
* Max dimensions Note: Bedroom dimensions taken into wardrobe recess