



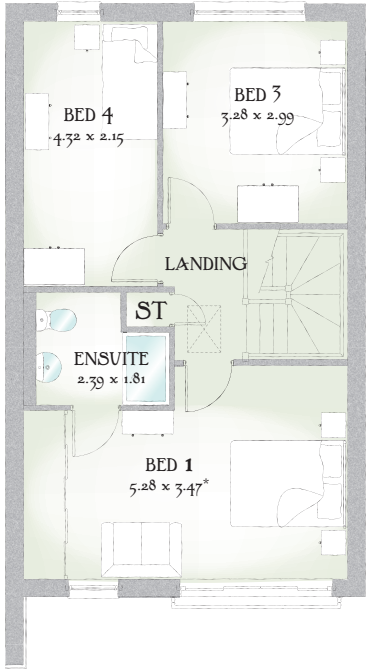
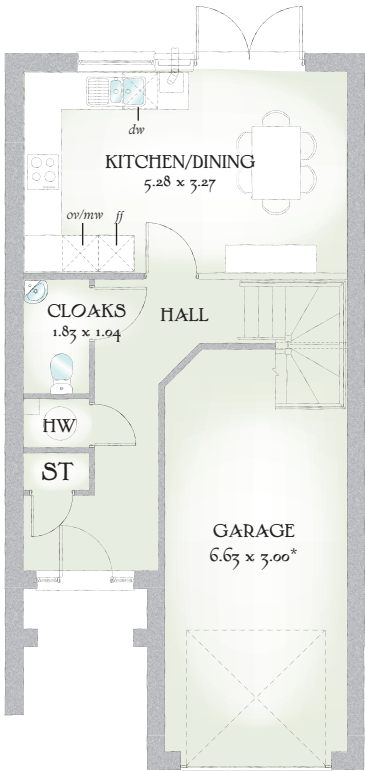
Lancaster^{END}

FOUR BEDROOM HOME



 REDROW

Lancaster^{END}



Though understated and simple from the outside, within you'll find a different level of luxury living, rising to new heights on the second floor which is so stylish and spacious you may never want to leave.

1 4 1 5 S Q F T | F O U R B E D R O O M H O M E

GROUND FLOOR

Kitchen/ Dining	17'4" x 10'9"	5.28 x 3.27 m
Cloaks	6'0" x 3'5"	1.83 x 1.04 m
Garage	21'9" x 9'10"	6.63 x 3.00 m*

FIRST FLOOR

Bedroom 2	17'4" x 10'9"	5.28 x 3.28 m
Bathroom	6'10" x 6'1"	2.09 x 1.85 m
Lounge	17'4" x 11'5"	5.28 x 3.48 m

SECOND FLOOR

Bedroom 1	17'4" x 11'5"	5.28 x 3.47 m*
Bedroom 3	10'9" x 9'10"	3.28 x 2.99 m
Bedroom 4	14'2" x 7'1"	4.32 x 2.15 m
EnSuite	7'10" x 5'11"	2.39 x 1.81 m*

Customers should note this illustration is an example of The Lancaster housetype. All dimensions indicated are approximate and furniture layout is for illustrative purposes only. Homes may be a 'handed' (mirror image) versions of the illustrations, and may be detached, semi-detached or terraced. Materials used may differ from plot to plot including render and roof tile colours. Detailed plans and specifications are available for inspection for each plot at our Marketing Suite during working hours and customers must check their individual specifications prior to making reservation.

KEY Hob Oven Microwave Fridge/freezer Washing machine Dishwasher Optional wardrobe Tumble dryer Hot Water Cylinder
* Max dimensions Note: Bedroom dimensions taken into wardrobe recess

Traditional homes, built the way you remember

REDROW
OUR PRIDE~YOUR JOY



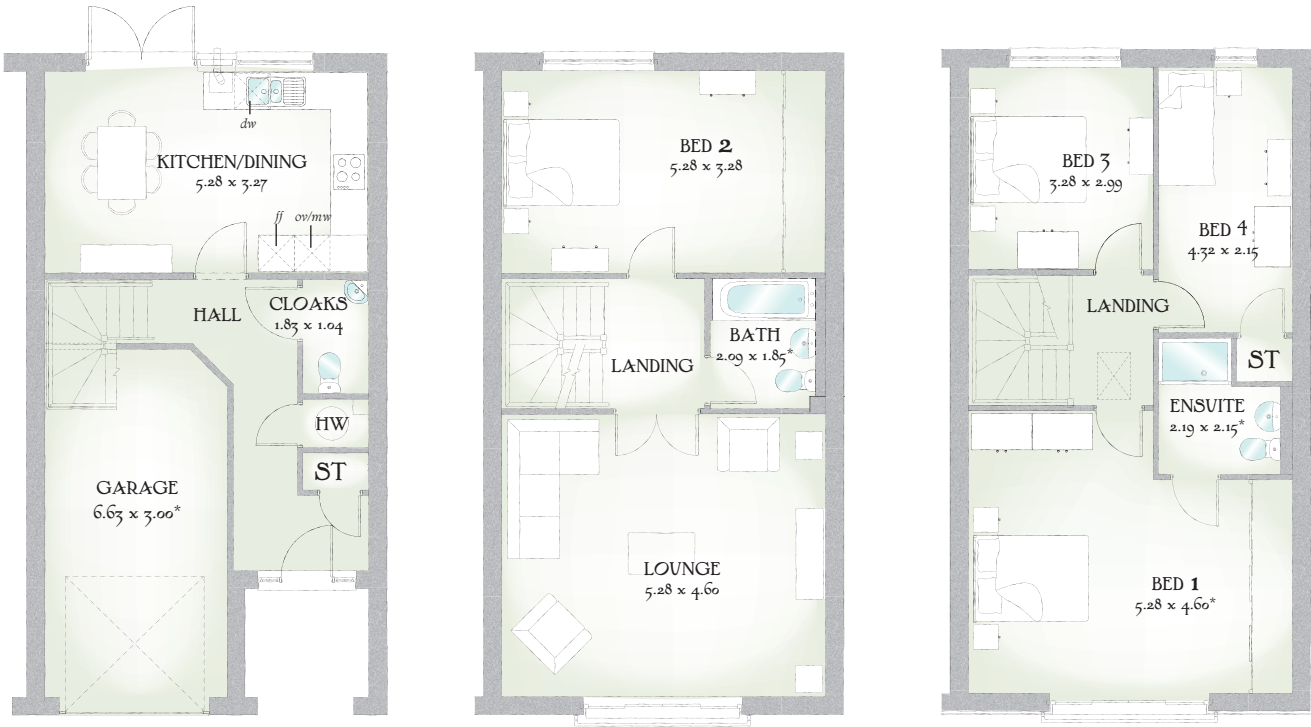
Lancaster^{MID}

FOUR BEDROOM HOME



 REDROW

Lancaster^{MID}



Though understated and simple from the outside, within you'll find a different level of luxury living, rising to new heights on the second floor which is so stylish and spacious you may never want to leave.

1 5 4 5 S Q F T | F O U R B E D R O O M H O M E

GROUND FLOOR

Kitchen/ Dining	17'4" x 10'9"	5.28 x 3.27 m
Cloaks	6'0" x 3'5"	1.83 x 1.04 m
Garage	21'9" x 9'10"	6.63 x 3.00 m*

FIRST FLOOR

Bedroom 2	17'4" x 10'9"	5.28 x 3.28 m
Bathroom	6'10" x 6'1"	2.09 x 1.85 m
Lounge	17'4" x 11'5"	5.28 x 3.48 m

SECOND FLOOR

Bedroom 1	17'4" x 11'5"	5.28 x 3.47 m*
Bedroom 3	10'9" x 9'10"	3.28 x 2.99 m
Bedroom 4	14'2" x 7'1"	4.32 x 2.15 m
EnSuite	7'2" x 7'1"	2.19 x 2.15 m*

Customers should note this illustration is an example of The Lancaster housetype. All dimensions indicated are approximate and furniture layout is for illustrative purposes only. Homes may be a 'handed' (mirror image) versions of the illustrations, and may be detached, semi-detached or terraced. Materials used may differ from plot to plot including render and roof tile colours. Detailed plans and specifications are available for inspection for each plot at our Marketing Suite during working hours and customers must check their individual specifications prior to making reservation.

KEY Hob Oven Microwave Fridge/freezer Washing machine space Dishwasher space Optional wardrobe Tumble dryer space Hot Water Cylinder
* Max dimensions Note: Bedroom dimensions taken into wardrobe recess

Traditional homes, built the way you remember

