



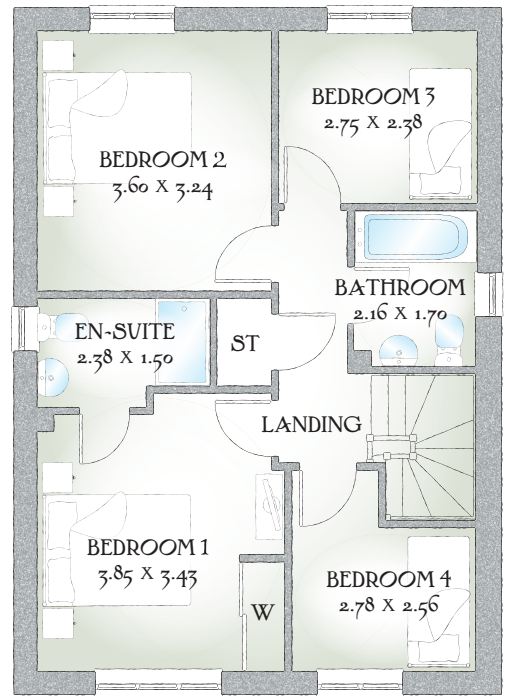
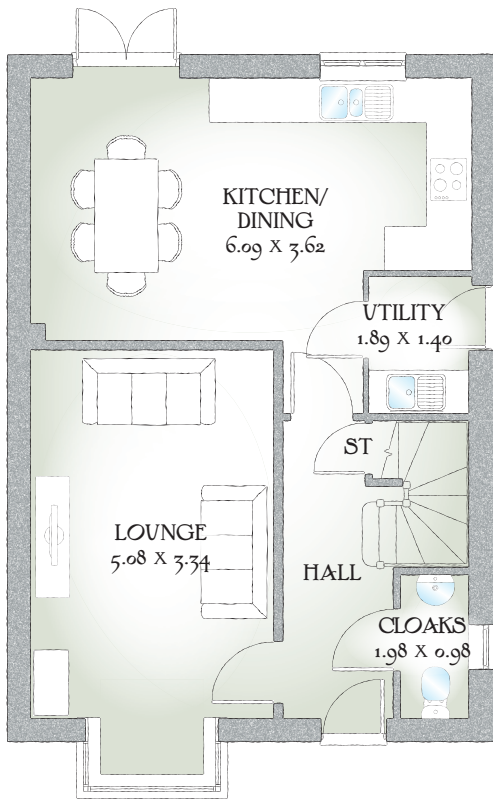
Lullington

FOUR BEDROOM HOME



 REDROW

Lullington



FOUR BEDROOM HOME

A delightful and carefully designed four bedroom detached home with a well thought out spacious kitchen and dining area.

GROUND FLOOR

Lounge	16'7" x 10'11"	5.08 x 3.34m
Kitchen/ Dining Area	19'11" x 11'10"	6.09 x 3.62m
Utility	6'2" x 4'7"	1.89 x 1.40m
Cloaks	6'5" x 3'2"	1.98 x 0.98m

FIRST FLOOR

Bedroom 1	12'7" x 11'2"	3.85 x 3.43m
En-suite	7'9" x 4'11"	2.38 x 1.50m
Bedroom 2	11'9" x 10'7"	3.60 x 3.24m
Bedroom 3	9'0" x 7'9"	2.75 x 2.38m
Bedroom 4	9'1" x 8'4"	2.78 x 2.56m
Bathroom	7'1" x 5'6"	2.16 x 1.70m

Customers should note this illustration is an example of The Lullington house type. All dimensions indicated are approximate and the furniture layout is for illustrative purposes only. Homes may be 'handed' (mirror image) versions of the illustrations, and may be detached, semi-detached or terraced. Materials used may differ from plot to plot including render and roof tile colours. Detailed plans and specifications are available for inspection for each plot at our Sales Centre during working hours and customers must check their individual specifications prior to making a reservation.

KEY Hob ST Cupboard W Wardrobe

Note: Bedroom dimensions taken into wardrobe recess. All wardrobes are subject to site specification. Please see Sales Consultant for further details.

Traditional homes, built the way you remember

 **REDROW**
A BETTER WAY TO LIVE