

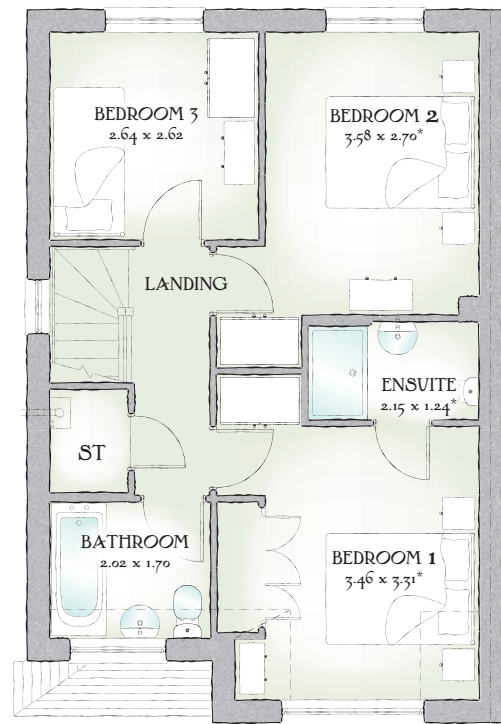
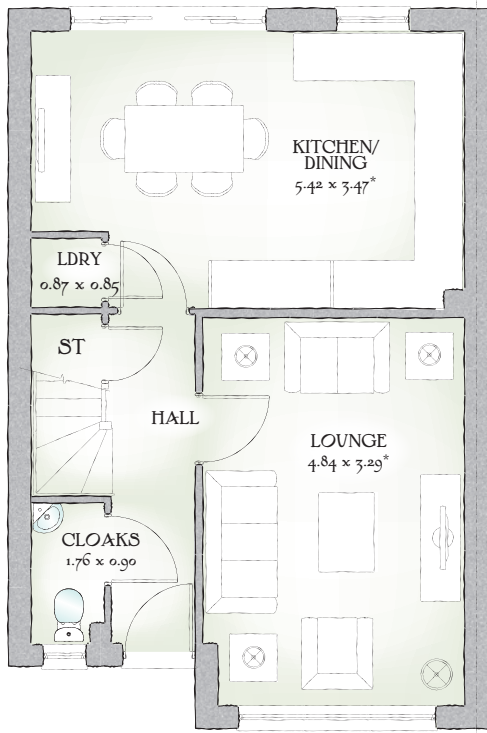


Ludlow

THREE BEDROOM HOME



 REDROW



963 SQ FT | THREE BEDROOM HOME

Quality doesn't have to be complicated. Sometimes, the simplest things have an undeniable elegance and charm, as you'll discover in the beautifully laid out Ludlow.

GROUND FLOOR

| | | |
|--------------------|-----------------|----------------|
| Lounge | 15'11" x 10'10" | 4.84 x 3.29 m* |
| Kitchen/ Dining | 17'9" x 11'4" | 5.42 x 3.47 m* |
| Cloaks | 5'9" x 2'11" | 1.76 x 0.90 m* |
| Laundry | 2'10" x 2'9" | 0.87 x 0.85 m |

FIRST FLOOR

| | | |
|-----------|----------------|----------------|
| Bedroom 1 | 11'4" x 10'10" | 3.46 x 3.31 m* |
| En-suite | 7'1" x 4'0" | 2.15 x 1.24 m* |
| Bedroom 2 | 11'8" x 8'10" | 3.58 x 2.70 m* |
| Bedroom 3 | 8'8" x 8'7" | 2.64 x 2.62 m |
| Bathroom | 6'8" x 5'6" | 2.02 x 1.70 m |

Customers should note this illustration is an example of The Ludlow house type. All dimensions indicated are approximate and the furniture layout is for illustrative purposes only. Homes may be 'handed' (mirror image) versions of the illustrations, and may be detached, semi-detached or terraced. Materials used may differ from plot to plot including render and roof tile colours. Detailed plans and specifications are available for inspection for each plot at our Sales Centre during working hours and customers must check their individual specifications prior to making a reservation.

KEY *Max dimensions Note: Bedroom dimensions taken into wardrobe recess. All wardrobes are subject to site specification. Please see Sales Consultant for further details.

Traditional homes, built the way you remember



REDROW
A BETTER WAY TO LIVE