



Oxford

FOUR BEDROOM HOME



 REDROW



Oxford

FOUR BEDROOM HOME



 REDROW



Oxford

FOUR BEDROOM HOME



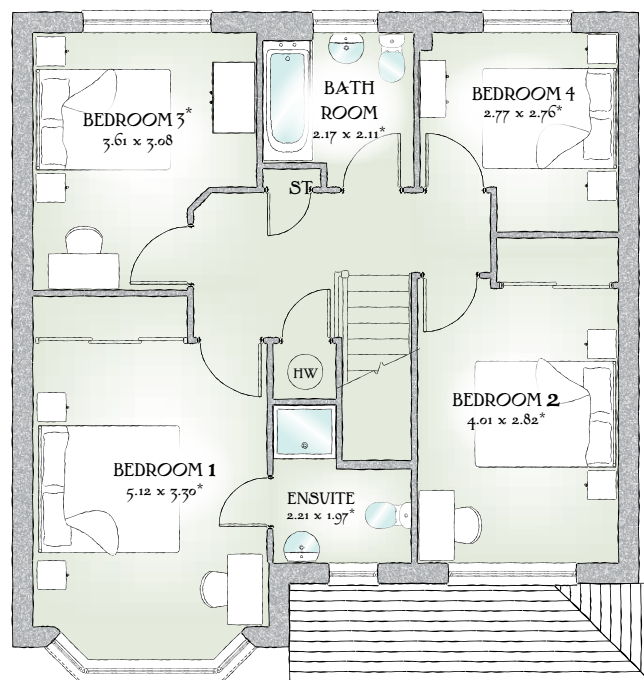
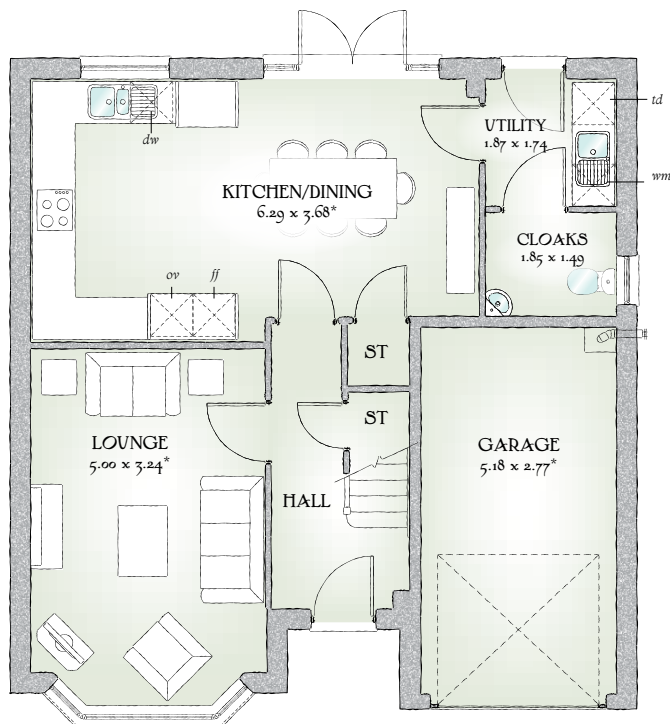
 REDROW



Oxford

FOUR BEDROOM HOME





1301 SQ FT | FOUR BEDROOM HOME

This is an excellent home of quality and character, built with pride to offer a solid foundation for family life. The Oxford's design captures the essence of traditional house building, including bay windows and a roofed porch.

GROUND FLOOR


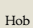
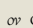
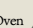
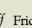

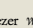
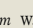
Lounge	16'5" x 10'7"	5.00 x 3.24 m*
Kitchen/ Dining	20'7" x 12'1"	6.29 x 3.68 m*
Cloaks	6'1" x 4'10"	1.85 x 1.49 m
Utility	6'1" x 5'9"	1.87 x 1.74 m
Garage	16'11" x 9'1"	5.18 x 2.77 m*

FIRST FLOOR

Bedroom 1	16'9" x 10'10"	5.12 x 3.30 m*
EnSuite	7'3" x 6'6"	2.21 x 1.97 m*
Bedroom 2	13'1" x 9'3"	4.01 x 2.82 m*
Bedroom 3	11'10" x 10'1"	3.61 x 3.08 m*
Bedroom 4	9'1" x 9'1"	2.77 x 2.76 m*
Bathroom	7'2" x 6'11"	2.17 x 2.11 m*

Customers should note this illustration is an example of The Oxford house type. All dimensions indicated are approximate and the furniture layout is for illustrative purposes only. Homes may be a 'handed' (mirror image) versions of the illustrations, and may be detached, semi-detached or terraced. Materials used may differ from plot to plot including render and roof tile colours. Detailed plans and specifications are available for inspection for each plot at our Marketing Suite during working hours and customers must check their individual specifications prior to making a reservation.

Redrow.co.uk give notice that the property particulars and related information on this site, whilst believed to be accurate, are set as a general outline for guidance only. Intending purchasers should not rely on them as statements or representations of fact, but must satisfy themselves before physical inspection as to their availability, or by physical inspection of the property in question or otherwise as to their accuracy or fit for purpose. Consequently, no information displayed on this site (or linked sites) constitutes or forms part of a contract. Materials used may differ from plot to plot including render and roof tile colours.

KEY  Hob  Oven  Fridge/freezer  Washing machine  space  Dishwasher  Tumble dryer  Hot Water Cylinder
* Max dimensions Note: Bedroom dimensions taken into wardrobe recess. All wardrobes are subject to site specification. Please see Sales Consultant for further details.

Traditional homes, built the way you remember