



Oxford[†]

FOUR BEDROOM HOME



 REDROW

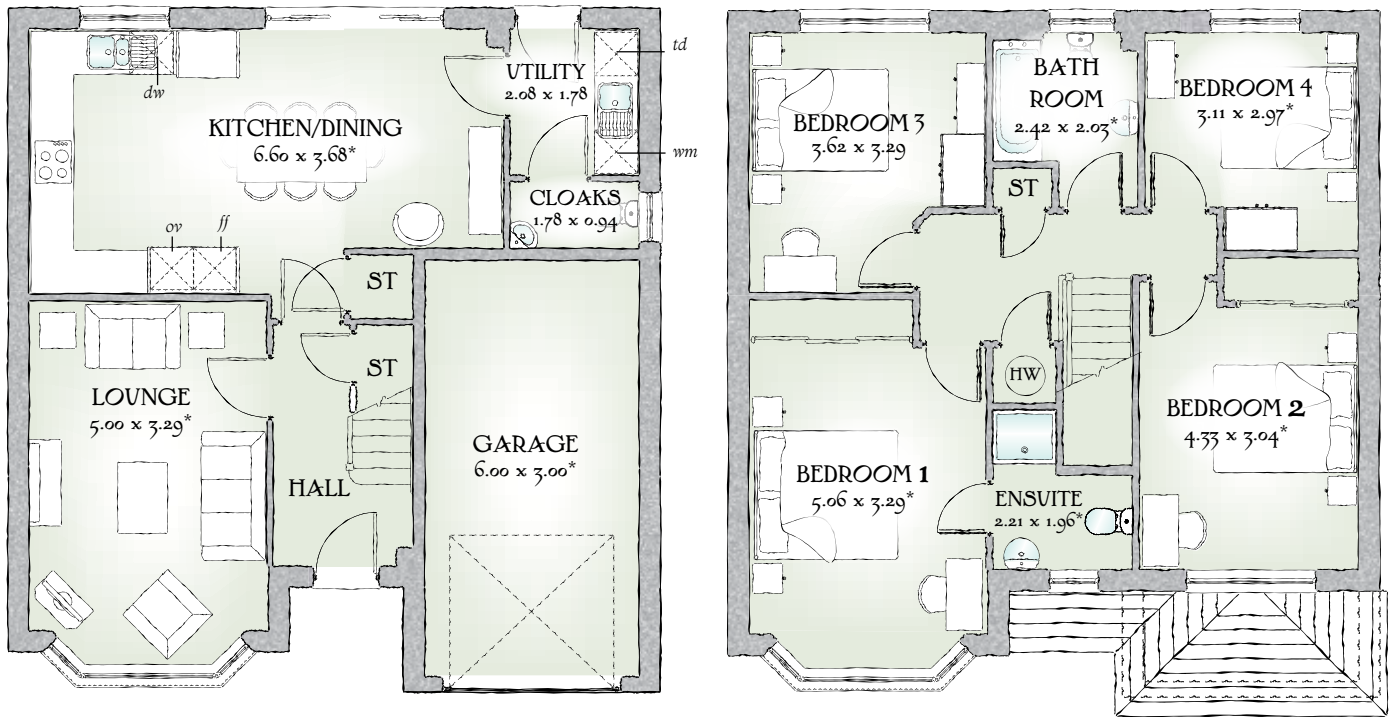


Oxford[†]

FOUR BEDROOM HOME



 REDROW



1317 SQ FT | FOUR BEDROOM HOME

This is an excellent home of quality and character, built with pride to offer a solid foundation for family life. The Oxford's design captures the essence of traditional house building, including bay windows and a roofed porch.


GROUND FLOOR

Lounge	16'5" x 10'10"	5.00 x 3.29 m*
Kitchen/Dining	21'8" x 12'1"	6.60 x 3.68 m*
Utility	6'10" x 5'10"	2.08 x 1.78 m
Cloaks	5'10" x 3'1"	1.78 x 0.94 m
Garage	19'8" x 9'10"	6.00 x 3.00 m*

FIRST FLOOR

Bedroom 1	16'7" x 10'10"	5.06 x 3.29 m*
EnSuite	7'3" x 6'5"	2.21 x 1.96 m*
Bedroom 2	14'3" x 10'0"	4.33 x 3.04 m*
Bedroom 3	11'11" x 10'10"	3.62 x 3.29 m*
Bedroom 4	10'2" x 9'9"	3.11 x 2.97 m
Bathroom	7'11" x 6'8"	2.42 x 2.03 m*

Customers should note this illustration is an example of The Oxford housetype. All dimensions indicated are approximate and furniture layout is for illustrative purposes only. Homes may be a 'handed' (mirror image) versions of the illustrations, and may be detached, semi-detached or terraced. Materials used may differ from plot to plot including render and roof tile colours. Detailed plans and specifications are available for inspection for each plot at our Marketing Suite during working hours and customers must check their individual specifications prior to making reservation.

KEY  Hob *ov* Oven *ff* Fridge/freezer *wm* Washing machine space *dw* Dishwasher space *op* Optional wardrobe *td* Tumble dryer space *hw* Hot Water Cylinder
*Max dimensions Note: Bedroom dimensions taken into wardrobe recess

Traditional homes, built the way you remember