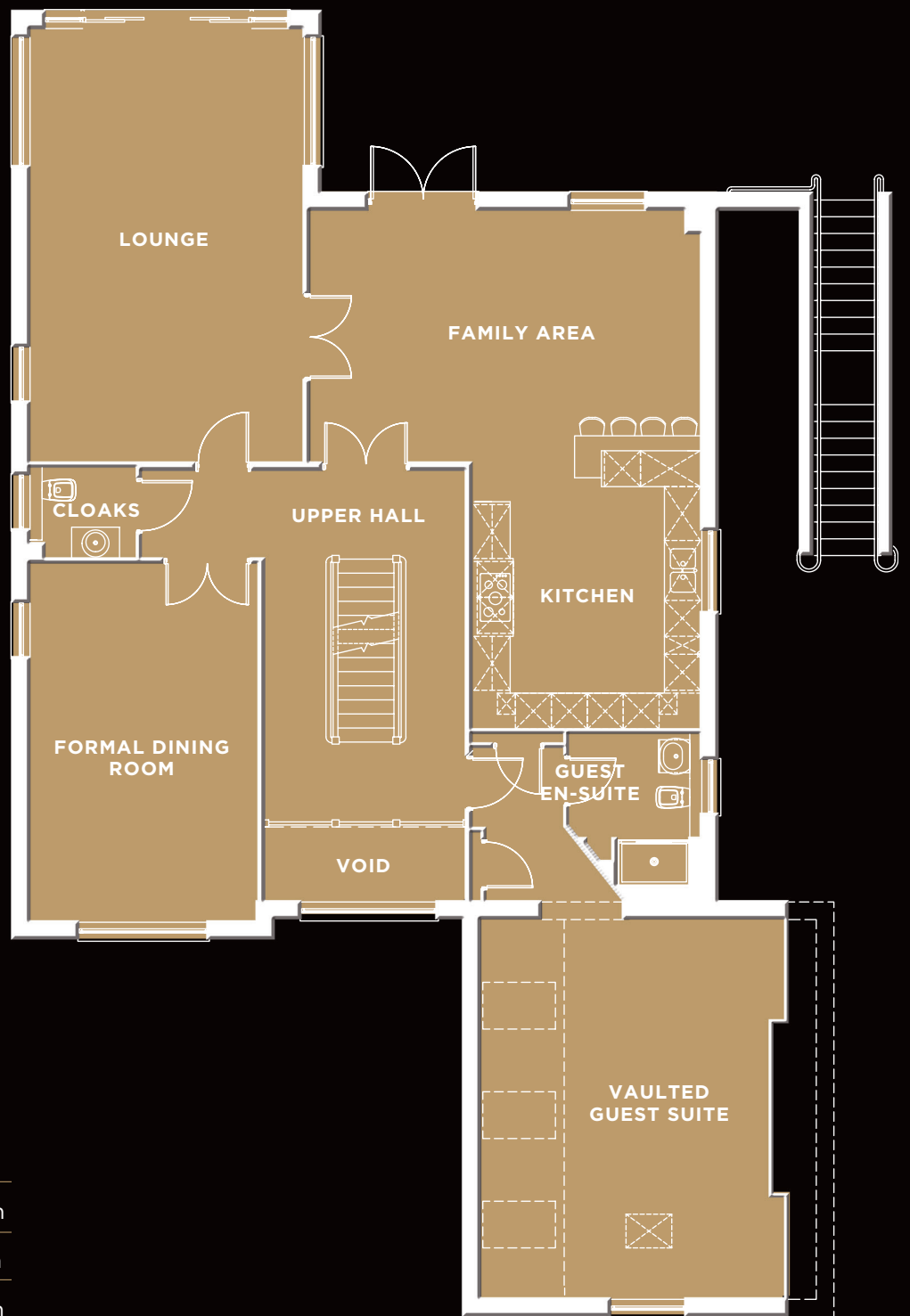


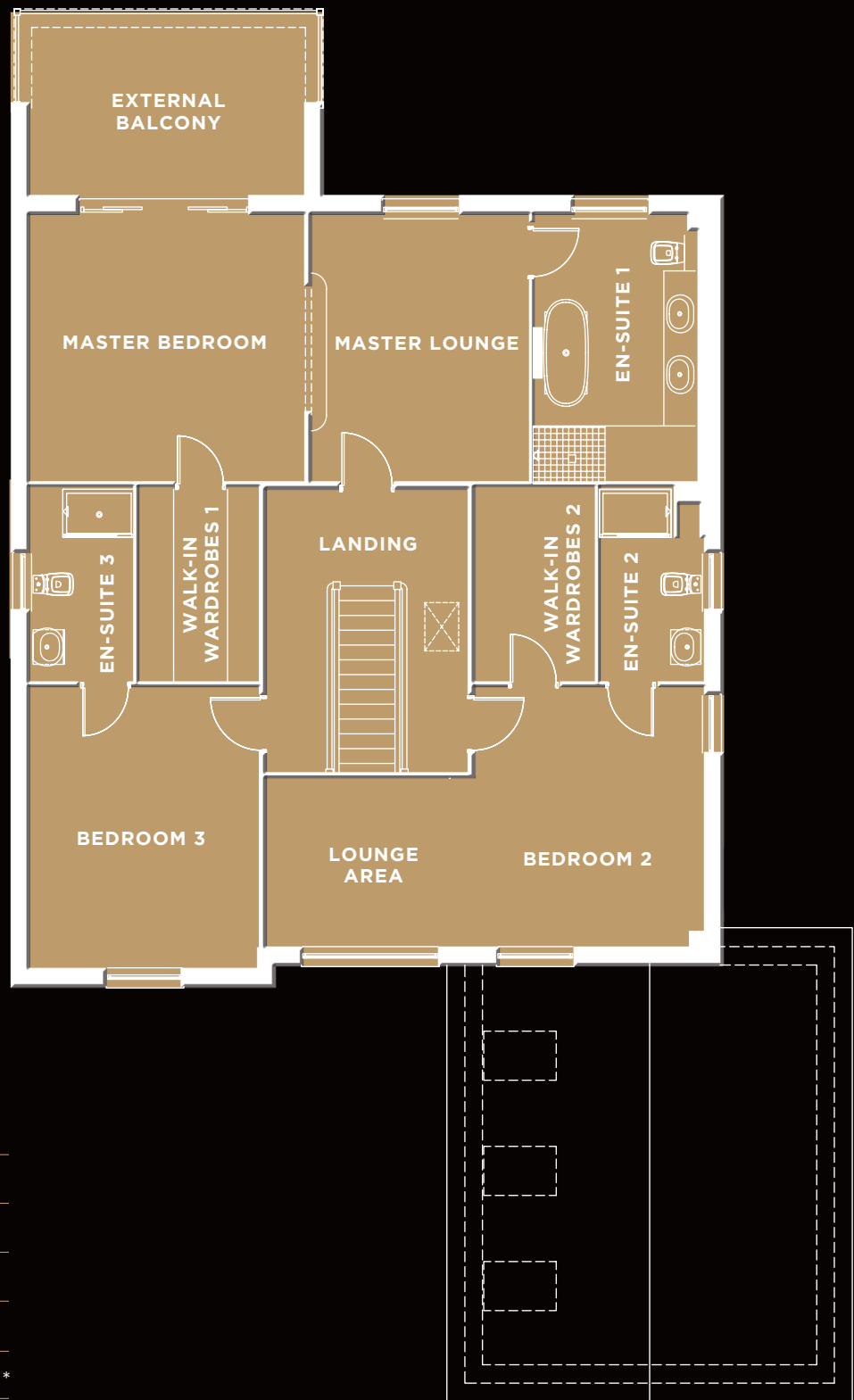
GROUND FLOOR

	FEET	METRES
PLANT/LAUNDRY	9'0" x 7'4"	2.74 x 2.24m
SHOWER	9'0" x 7'8"	2.74 x 2.33m
OFFICE/CINEMA/GYM	21'9" x 12'4"	6.63 x 3.77m
TEENAGER SUITE	15'2" x 12'4"	4.63 x 3.77m
TEENAGER EN-SUITE	4'10" x 12'4"	1.47 x 3.77m
STUDY/SNUG	14'2" x 12'4"	4.31 x 3.77m
DOUBLE GARAGE	20'10" x 18'4"	6.34 x 5.59m



FIRST FLOOR

	FEET	METRES
LOUNGE	23'7" x 14'10"	7.19 x 4.52m
KITCHEN	14'6" x 12'4"	4.42 x 3.77m
FAMILY AREA	13'9" x 21'3"	4.18 x 6.48m
FORMAL DINING ROOM	19'6" x 12'4"	5.96 x 3.77m
GUEST EN-SUITE	8'4" x 7'1"	2.54 x 2.17m*
VAULTED GUEST SUITE	20'8" x 16'6"	6.29 x 5.04m*
CLOAKS	4'11" x 5'9"	1.51 x 1.75m



SECOND FLOOR

	FEET	METRES
EXTERNAL BALCONY	14'12" x 8'12"	4.57 x 2.74m
MASTER BED	14'8" x 13'1"	4.47 x 3.99m
MASTER LOUNGE	13'1" x 11'9"	3.99 x 3.59m
EN-SUITE 1	13'1" x 9'2"	3.99 x 2.80m
WALK-IN WARDROBE 1	10'0" x 6'6"	3.05 x 1.99m
BEDROOM 2/LOUNGE	23'9" x 13'4"	7.24 x 4.08m*
EN-SUITE 2	10'0" x 5'7"	3.05 x 1.70m
WALK-IN WARDROBE 2	10'0" x 6'6"	3.05 x 1.99m
BEDROOM 3	14'6" x 12'4"	4.41 x 3.77m
EN-SUITE 3	10'0" x 5'7"	3.05 x 1.70m

Customers should note this illustration is an example of The Mariners Reach housetype. All dimensions indicated are approximate and furniture layout is for illustrative purposes only. Materials used may differ from plot to plot including render and roof tile colours. Detailed plans and specifications are available for inspection for each plot at our Marketing Suite during working hours and customers must check their individual specifications prior to making reservation.