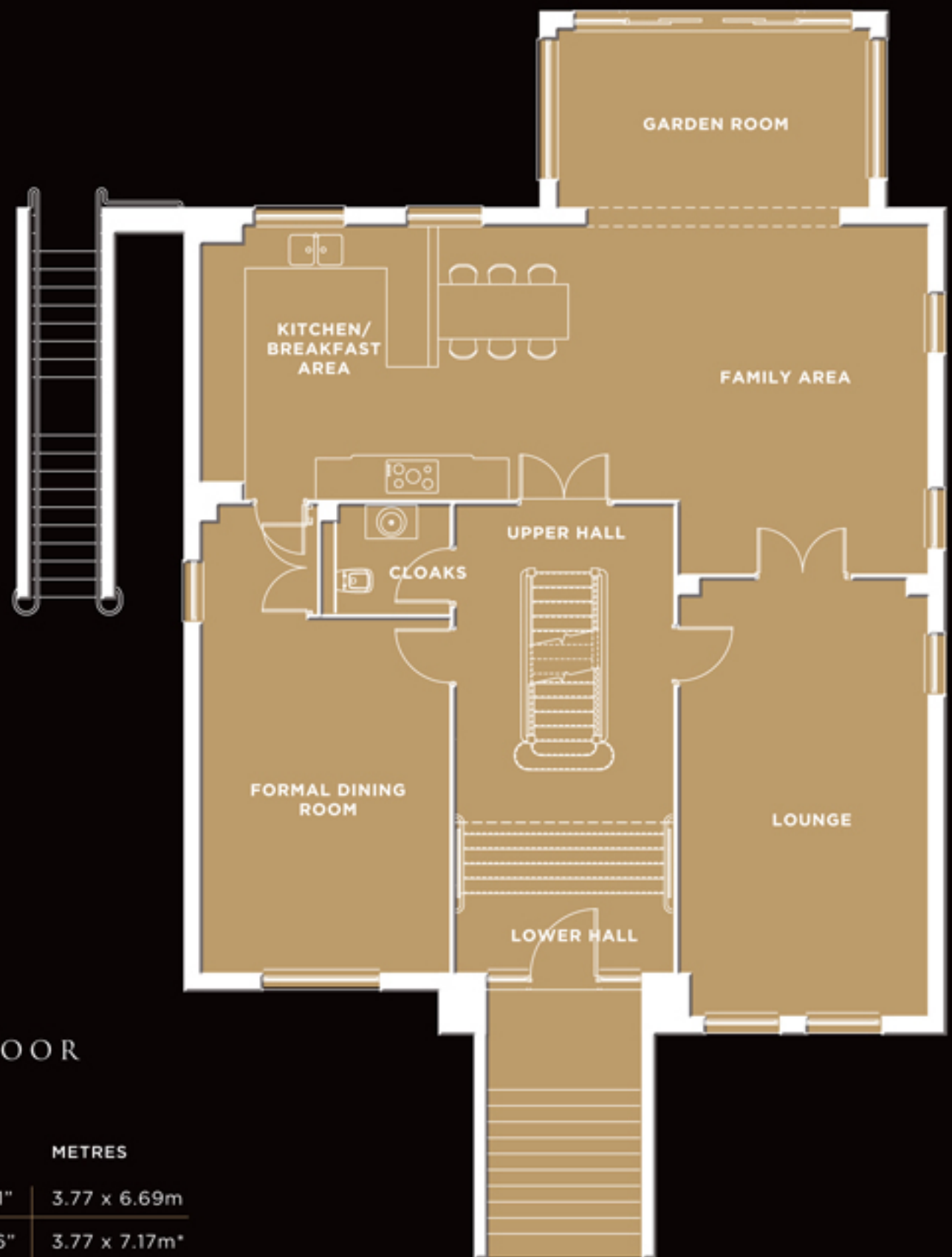




 LOWER GROUND FLOOR

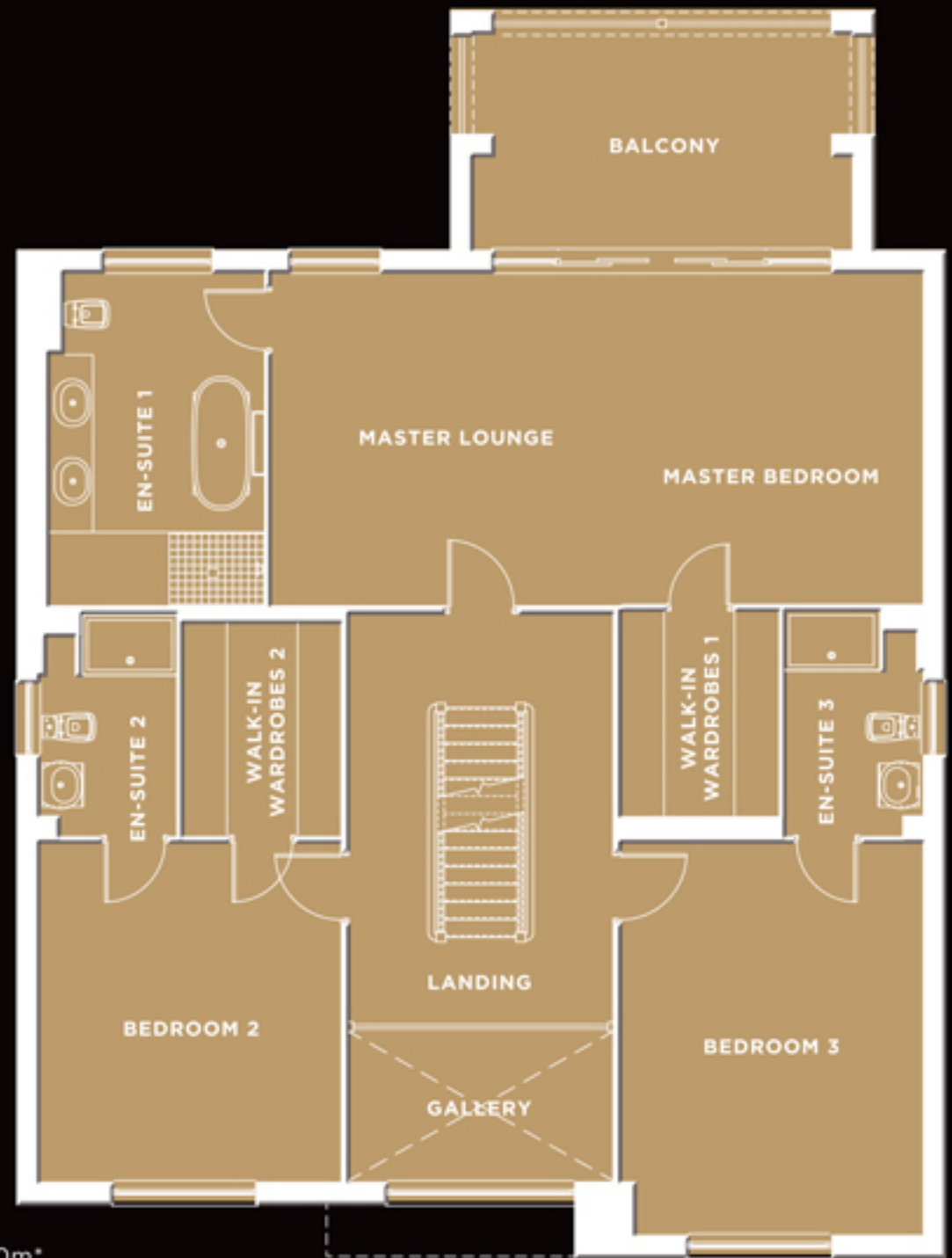
	FEET	METRES
PLANT/LAUNDRY	6'4" x 13'5"	1.93 x 4.10m
SHOWER	5'8" x 13'3"	1.75 x 4.04m
OFFICE/CINEMA/GYM	23'8" x 16'10"	7.23 x 5.14m*
GARAGE 1	12'6" x 16'10"	3.83 x 5.13m
GARAGE 2	16'0" x 21'9"	4.89 x 6.63m*



 UPPER GROUND FLOOR

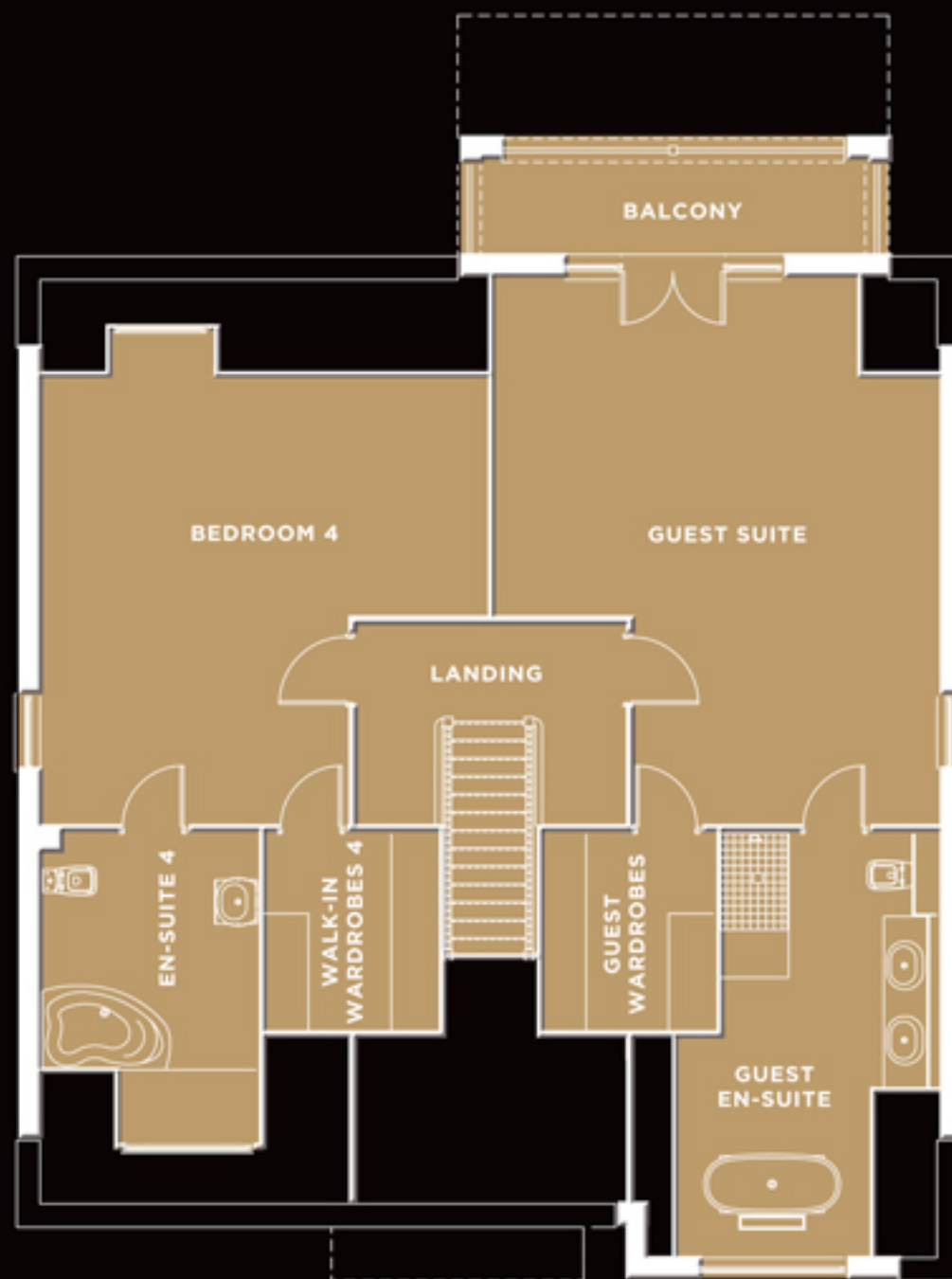
	FEET	METRES
<b>LOUNGE</b>	12'4" x 21'11"	3.77 x 6.69m
<b>FORMAL DINING ROOM</b>	12'4" x 23'6"	3.77 x 7.17m*
<b>FAMILY AREA</b>	16'0" x 17'5"	4.90 x 5.33m*
<b>KITCHEN/ BREAKFAST AREA</b>	20'6" x 13'8"	6.26 x 4.18m
<b>CLOAKS</b>	5'9" x 5'5"	1.76 x 1.65m
<b>GARDEN ROOM</b>	8'9" x 15'7"	2.69 x 4.75m

 FIRST FLOOR



	FEET	METRES
BALCONY	15'8" x 9'6"	4.79 x 2.90m*
MASTER BED/ MASTER LOUNGE	13'8" x 27'0"	4.18 x 8.24m
EN-SUITE 1	13'8" x 9'3"	4.18 x 2.82m*
WALK-IN WARDROBE 1	6'5" x 8'6"	1.97 x 2.61m
BEDROOM 2	12'4" x 13'11"	3.77 x 4.26m
EN-SUITE 2	5'7" x 9'1"	1.71 x 2.79m*
WALK-IN WARDROBE 2	6'5" x 8'6"	1.97 x 2.60m
BEDROOM 3/STUDY	12'4" x 16'3"	3.77 x 4.96m
EN-SUITE 3	5'7" x 9'4"	1.71 x 2.85m*

 SECOND FLOOR



	FEET	METRES
BALCONY	3'10" x 15'9"	1.18 x 4.81m
BEDROOM 4	18'2" x 18'4"	5.54 x 5.59m*
EN-SUITE 4	9'8" x 9'1"	2.95 x 2.77m*
WALK-IN WARDROBE 4	7'1" x 8'2"	2.16 x 2.50m
GUEST SUITE	18'2" x 22'4"	5.54 x 6.81m*
GUEST EN-SUITE	17'3" x 10'4"	5.28 x 3.15m*
GUEST WARDROBE	7'1" x 8'2"	2.16 x 2.50m