

# Shrewsbury



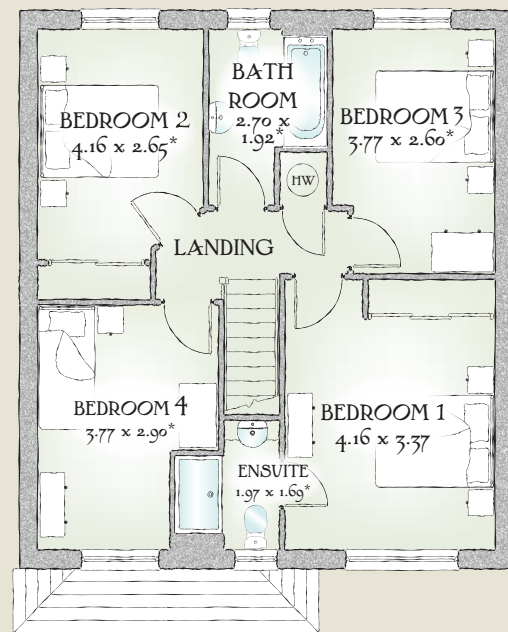
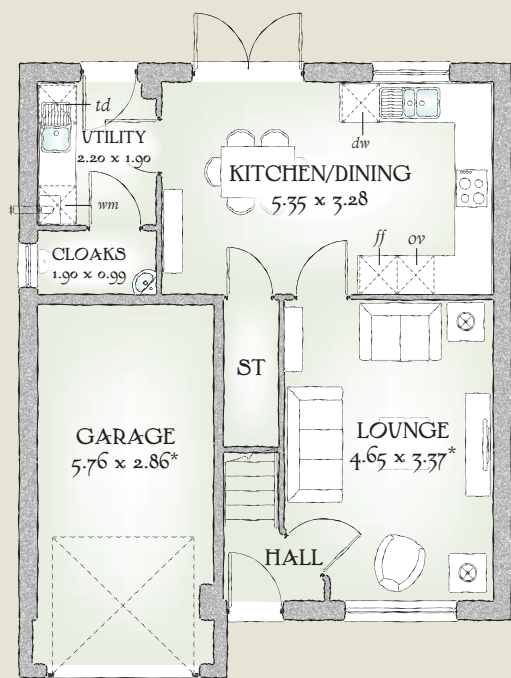
A substantial family home that is as dependable as it is solid, with elegant design making the most of the space available to provide ample room for family living, that makes living so much simpler.

## GROUND FLOOR

Lounge	15'3" x 11'1"	4.65 x 3.37 m*
Kitchen/ Dining	17'7" x 10'9"	5.35 x 3.28 m
Cloaks	6'3" x 3'3"	1.90 x 0.99 m
Utility	7'3" x 6'3"	2.20 x 1.90 m
Garage	18'11" x 9'5"	5.76 x 2.86 m*

## FIRST FLOOR

Bedroom 1	13'8" x 11'1"	4.16 x 3.37 m
En-suite	6'6" x 5'7"	1.97 x 1.69 m*
Bedroom 2	13'8" x 8'8"	4.16 x 2.65 m*
Bedroom 3	12'4" x 8'6"	3.77 x 2.60 m*
Bedroom 4	12'4" x 9'6"	3.77 x 2.90 m*
Bathroom	8'10" x 6'4"	2.70 x 1.92 m*



1134 SQ FT | FOUR BEDROOM HOME

Customers should note this illustration is an example of The Shrewsbury house type. All dimensions indicated are approximate and furniture layout is for illustrative purposes only. Homes may be a 'handed' (mirror image) version of the illustrations, and may be detached, semi-detached or terraced. Materials used may differ from plot to plot including render and roof tile colours. Detailed plans and specifications are available for inspection for each plot at our Sales Centre during working hours and customers must check their individual specifications prior to making reservation.

KEY Hob ov Oven ff Fridge/freezer wm Washing machine space dw Dishwasher space td Tumble dryer space (HW) Hot Water Cylinder ST Cupboard

\*Max dimensions Note: Bedroom dimensions taken into wardrobe recess. All wardrobes are subject to site specification. Please see Sales Consultant for further details.

Traditional homes, built the way you remember

