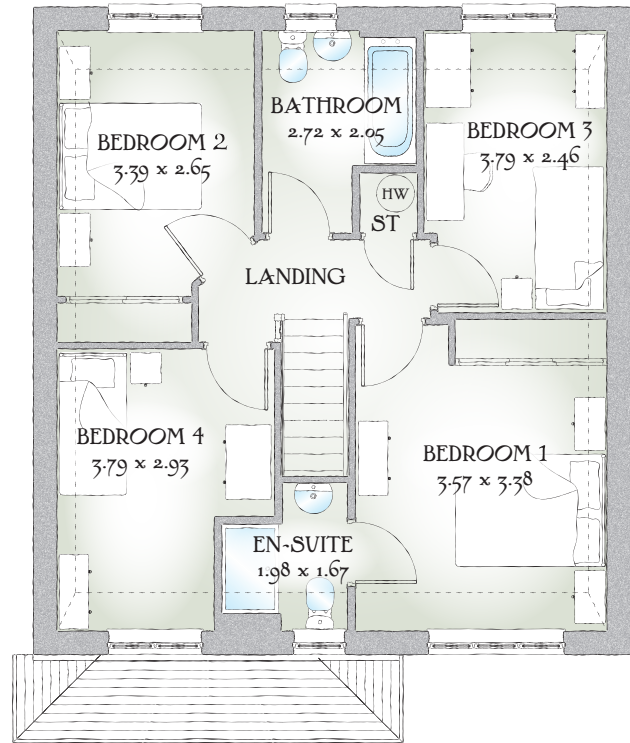
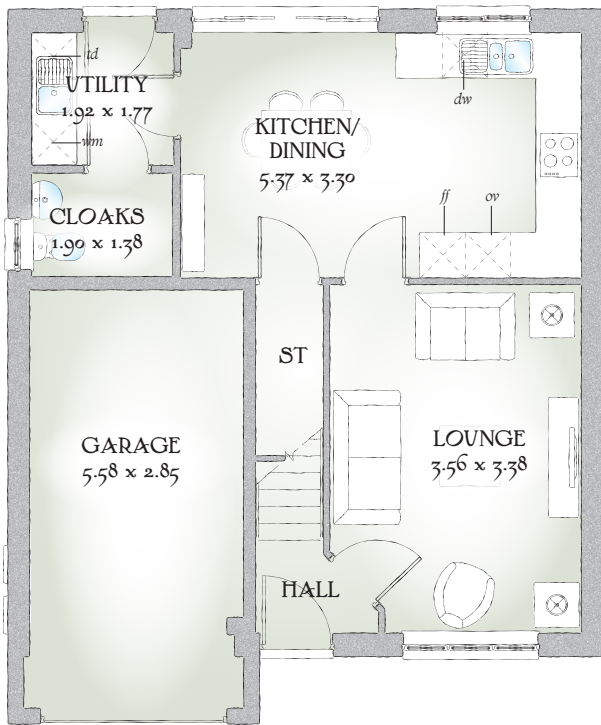




# Shrewsbury

FOUR BEDROOM HOME





## FOUR BEDROOM HOME

The perfect home to provide a foundation for family life, The Shrewsbury is elegantly designed to enhance each detail of the home. A spacious layout provides four bedrooms, three of them doubles, a well-planned kitchen/dining room and a comfortable lounge in which to relax.

### GROUND FLOOR

Lounge	11'8" x 11'1"	3.56 x 3.38 m
Kitchen/ Dining	17'7" x 10'10"	5.37 x 3.30 m
Utility	6'4" x 5'10"	1.92 x 1.77 m
Cloaks	6'3" x 4'6"	1.90 x 1.38 m
Garage	18'4" x 9'4"	5.58 x 2.85 m


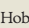
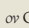




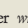
### FIRST FLOOR

Bedroom 1	11'9" x 11'1"	3.57 x 3.38 m
En-suite	6'6" x 5'6"	1.98 x 1.67 m
Bedroom 2	11'1" x 8'8"	3.39 x 2.65 m
Bedroom 3	12'5" x 8'1"	3.79 x 2.46 m
Bedroom 4	12'5" x 9'7"	3.79 x 2.93 m
Bathroom	8'11" x 6'9"	2.72 x 2.05 m

#### CONSUMER CODE FOR HOME BUILDERS

[www.consumercode.co.uk](http://www.consumercode.co.uk)

Customers should note this illustration is an example of The Shrewsbury house type. All dimensions indicated are approximate and the furniture layout is for illustrative purposes only. Homes may be 'handed' (mirror image) versions of the illustrations, and may be detached, semi-detached or terraced. Materials used may differ from plot to plot including render and roof tile colours. Detailed plans and specifications are available for inspection for each plot at our Sales Centre during working hours and customers must check their individual specifications prior to making a reservation.

KEY  Hob  Oven  Fridge/freezer  Washing machine space  Dishwasher space  Tumble dryer space  Hot water cylinder  Cupboard

\* Max dimensions Note: Bedroom dimensions taken into wardrobe recess. All wardrobes are subject to site specification. Please see Sales Consultant for further details.

Redrow.co.uk give notice that the property particulars and related information on this site, whilst believed to be accurate, are set as a general outline for guidance only. Intending purchasers should not rely on them as statements or representations of fact, but must satisfy themselves before physical inspection as to their availability, or by physical inspection of the property in question or otherwise as to their accuracy or fit for purpose. Consequently, no information displayed on this site (or linked sites) constitutes or forms part of a contract. Materials used may differ from plot to plot including render and roof tile colours.

Traditional homes, built the way you remember