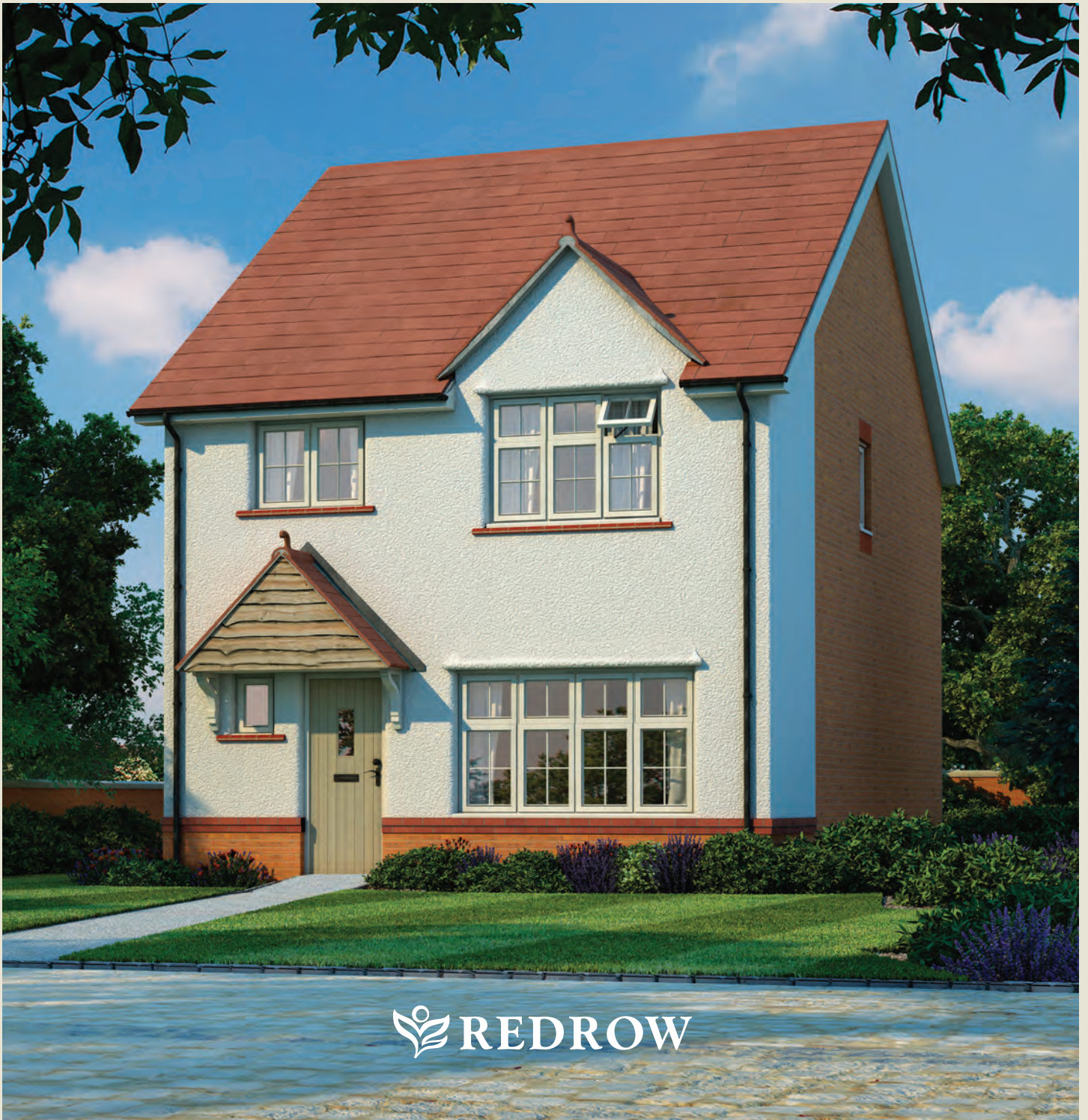




Stratford

FOUR BEDROOM HOME





Stratford

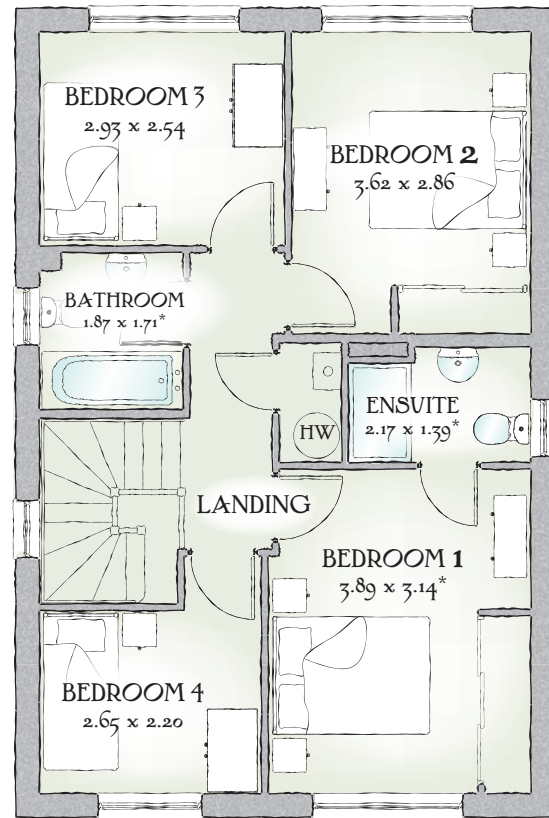
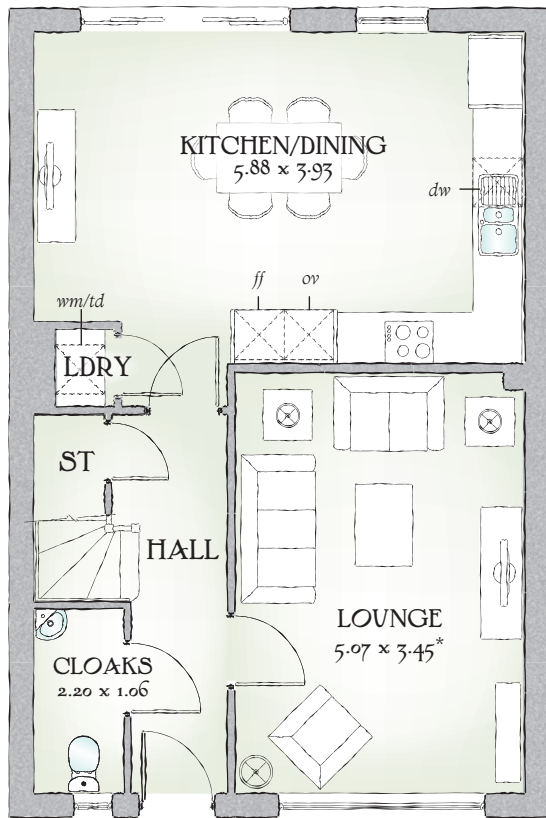
FOUR BEDROOM HOME



 REDROW



Stratford



1173 SQ FT | FOUR BEDROOM HOME

More than anything The Stratford is a home with hidden depths, for behind its unmistakable arts and crafts frontage stretches a space of multiple rooms flexible enough to meet the needs of family life.

GROUND FLOOR

Lounge	16'8" x 11'4"	5.07 x 3.45 m*
Kitchen/ Dining	19'3" x 12'11"	5.88 x 3.93 m
Cloaks	7'3" x 3'6"	2.20 x 1.06 m
Laundry	3'0" x 2'4"	0.91 x 0.72 m

FIRST FLOOR

Bedroom 1	12'9" x 10'4"	3.89 x 3.14 m*
EnSuite	7'1" x 4'7"	2.17 x 1.39 m*
Bedroom 2	11'11" x 9'5"	3.62 x 2.86 m
Bedroom 3	9'7" x 8'4"	2.93 x 2.54 m
Bedroom 4	8'8" x 7'3"	2.65 x 2.20 m
Bathroom	6'2" x 5'7"	1.87 x 1.71 m*

Customers should note this illustration is an example of The Stratford housetype. All dimensions indicated are approximate and furniture layout is for illustrative purposes only. Homes may be a 'handed' (mirror image) versions of the illustrations, and may be detached, semi-detached or terraced. Materials used may differ from plot to plot including render and roof tile colours. Detailed plans and specifications are available for inspection for each plot at our Marketing Suite during working hours and customers must check their individual specifications prior to making reservation.

KEY Hob Oven Fridge/freezer Washing machine space Dishwasher space Optional wardrobe Tumble dryer space Hot Water Cylinder

*Max dimensions Note: Bedroom dimensions taken into wardrobe recess

Traditional homes, built the way you remember

