



# Warwick

THREE BEDROOM HOME



 REDROW

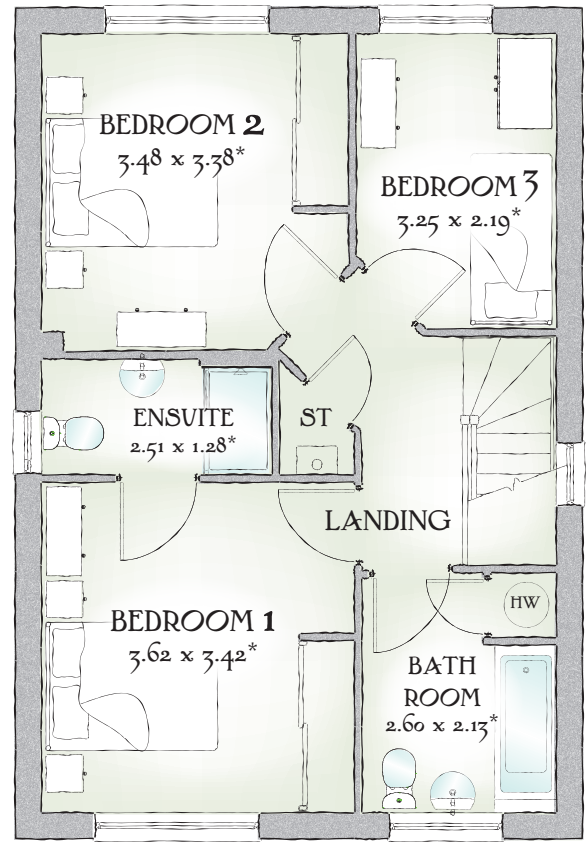
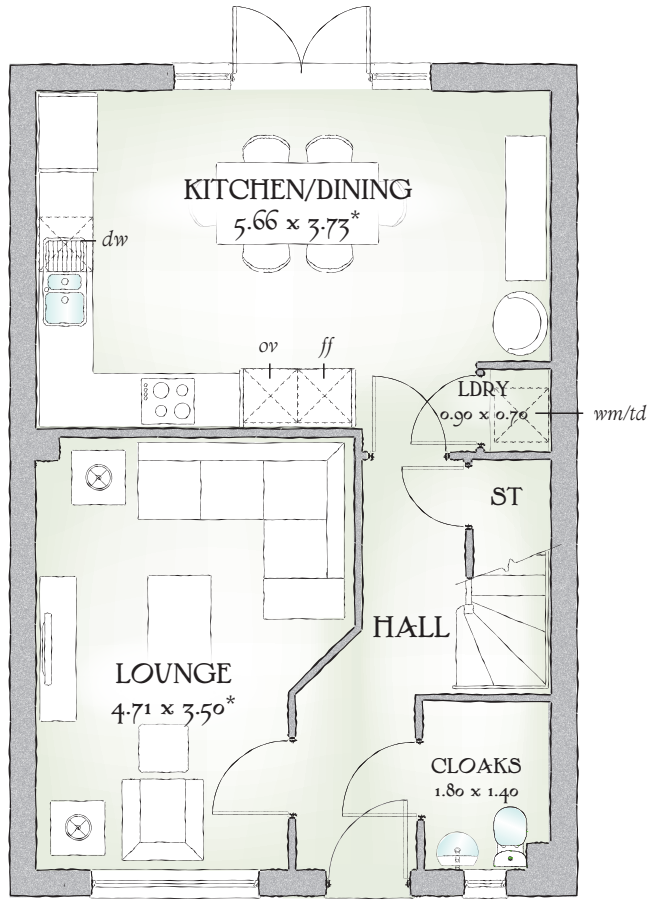


# Warwick

THREE BEDROOM HOME



 REDROW



1059 SQ FT | THREE BEDROOM HOME

The Warwick has an authentic aura about it that underlines the sense of quality and craftsmanship that is evident throughout.

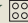
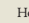
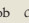
## GROUND FLOOR

Lounge	15'5" x 11'6"	4.71 x 3.50 m*
Kitchen/ Dining	18'7" x 12'3"	5.66 x 3.73 m*
Cloaks	5'11" x 4'7"	1.80 x 1.40 m
Laundry	2'11" x 2'4"	0.90 x 0.70 m

## FIRST FLOOR

Bedroom 1	11'11" x 11'3"	3.62 x 3.42 m*
En-suite	8'3" x 4'2"	2.51 x 1.28 m*
Bedroom 2	11'5" x 11'1"	3.48 x 3.38 m*
Bedroom 3	10'8" x 7'2"	3.25 x 2.19 m*
Bathroom	8'6" x 7'0"	2.60 x 2.13 m*

Customers should note this illustration is an example of The Warwick house type. All dimensions indicated are approximate and furniture layout is for illustrative purposes only. Homes may be a 'handed' (mirror image) versions of the illustrations, and may be detached, semi-detached or terraced. Materials used may differ from plot to plot including render and roof tile colours. Detailed plans and specifications are available for inspection for each plot at our Sales Centre during working hours and customers must check their individual specifications prior to making reservation.

KEY  Dishwasher space  Tumble dryer space  Hot Water Cylinder  
\*Max dimensions Note: Bedroom dimensions taken into wardrobe recess. All wardrobes are subject to site specification. Please see Sales Consultant for further details.