



Warwick

THREE BEDROOM HOME



 REDROW

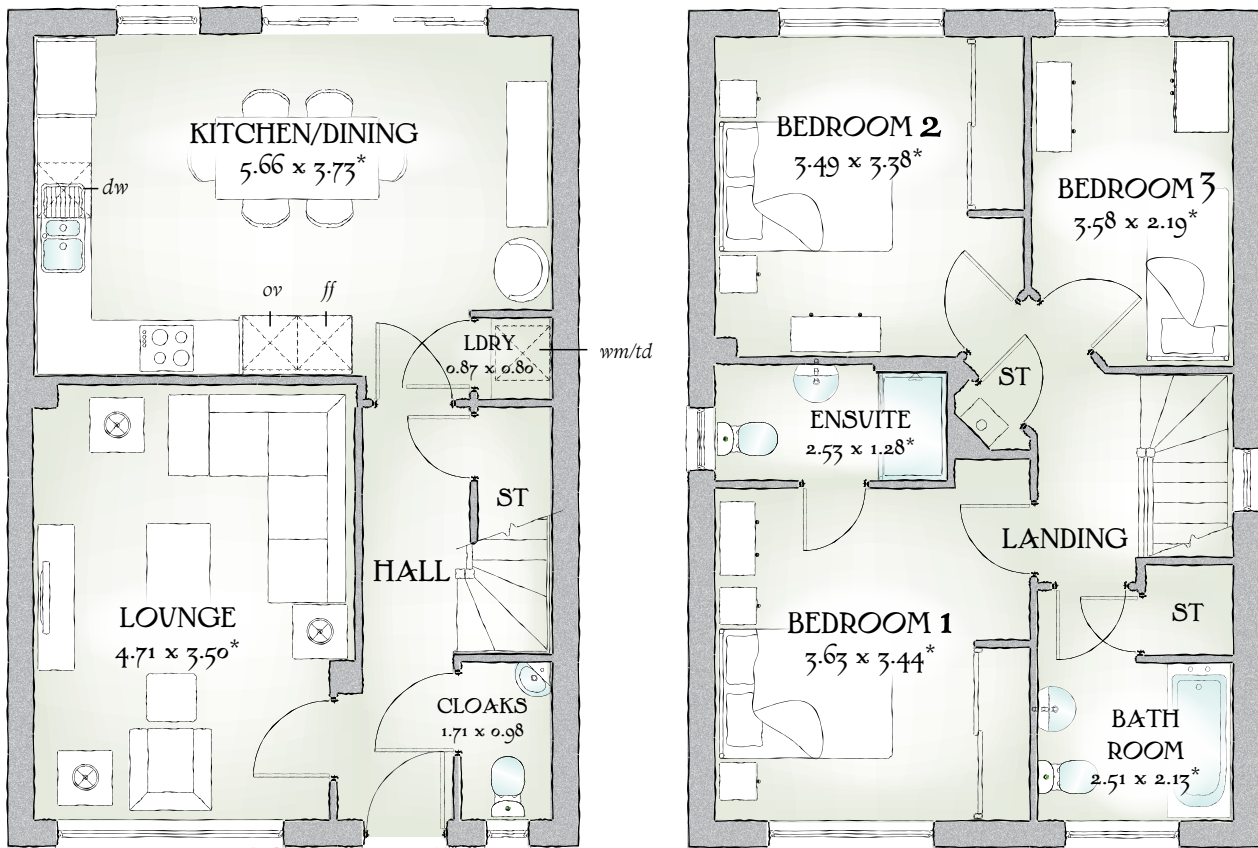


Warwick

THREE BEDROOM HOME



 REDROW



1060 SQ FT | THREE BEDROOM HOME

The Warwick has an authentic aura about it that underlines the sense of quality and craftsmanship that is evident throughout.

GROUND FLOOR

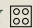
Lounge	15'5" x 11'6"	4.70 x 3.50 m*
Kitchen/ Dining	18'7" x 12'3"	5.66 x 3.73 m*
Cloaks	5'7" x 3'3"	1.71 x 0.98 m
Laundry	2'10" x 2'7"	0.87 x 0.80 m

FIRST FLOOR

Bedroom 1	11'11" x 11'3"	3.63 x 3.44 m*
En-suite	8'4" x 4'2"	2.53 x 1.28 m*
Bedroom 2	11'5" x 11'1"	3.49 x 3.38 m*
Bedroom 3	11'6" x 7'2"	3.58 x 2.19 m*
Bathroom	8'3" x 7'0"	2.51 x 2.13 m*

Customers should note this illustration is an example of The Warwick house type. All dimensions indicated are approximate and furniture layout is for illustrative purposes only. Homes may be a 'handed' (mirror image) versions of the illustrations, and may be detached, semi-detached or terraced. Materials used may differ from plot to plot including render and roof tile colours. Detailed plans and specifications are available for inspection for each plot at our Sales Centre during working hours and customers must check their individual specifications prior to making reservation.

Redrow.co.uk give notice that the property particulars and related information on this site, whilst believed to be accurate, are set as a general outline for guidance only. Intending purchasers should not rely on them as statements or representations of fact, but must satisfy themselves before physical inspection as to their availability, or by physical inspection of the property in question or otherwise as to their accuracy or fit for purpose. Consequently, no information displayed on this site (or linked sites) constitutes or forms part of a contract. Materials used may differ from plot to plot including render and roof tile colours.

KEY  Hob ov Oven ff Fridge/freezer td Tumble dryer space dw Dishwasher space wm Washing machine space * Max dimensions
Note: Bedroom dimensions taken into wardrobe recess. All wardrobes are subject to site specification. Please see Sales Consultant for further details.

Traditional homes, built the way you remember