



# Windsor

FOUR BEDROOM HOME



 REDROW

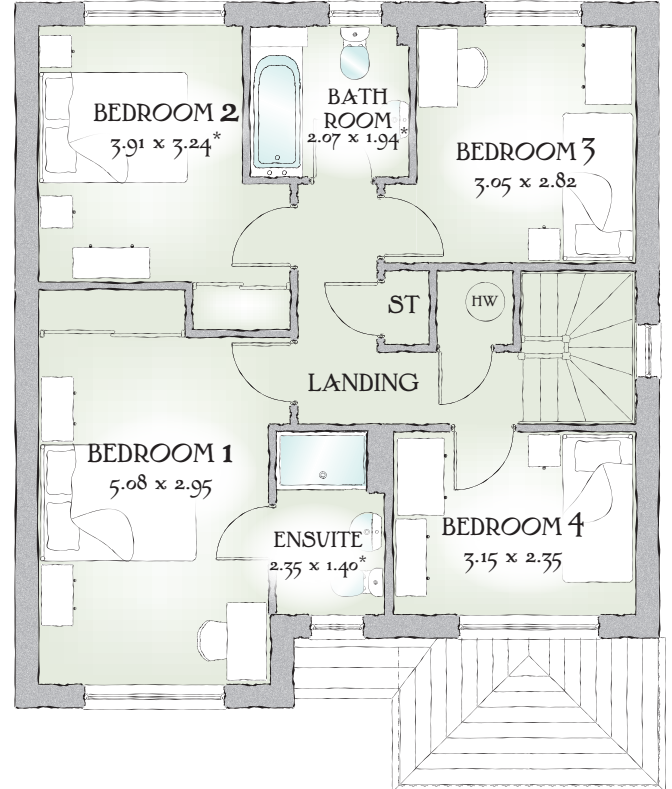
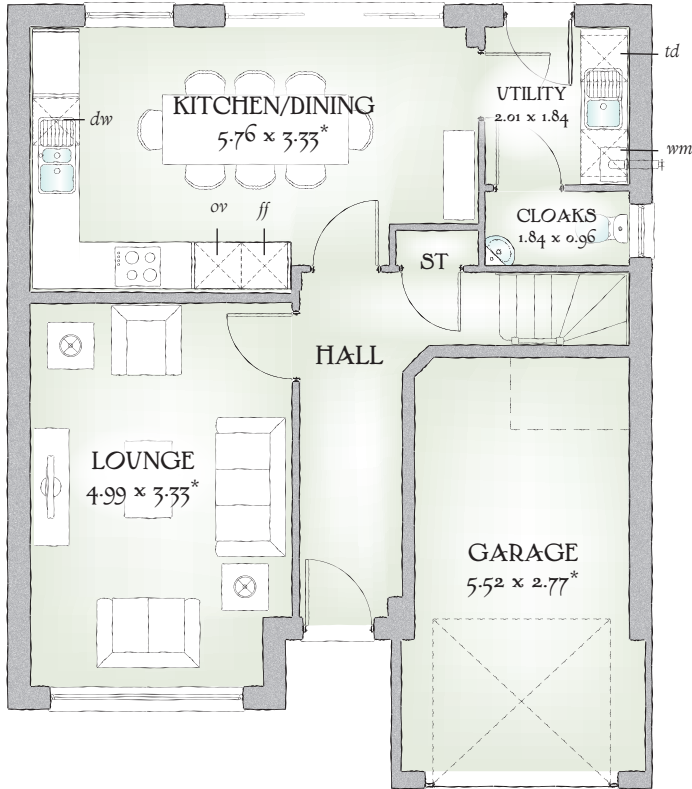


# Windsor

FOUR BEDROOM HOME



 REDROW



1219 SQ FT | FOUR BEDROOM HOME

This home has extensive living space that excels at every turn, from the pleasing proportions of every room to the excellent use of space, to the luxurious finishing touches that complete this special home.


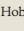
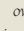
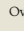
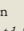
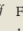
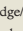
## GROUND FLOOR

Lounge	16'4" x 10'11"	4.99 x 3.33 m*
Kitchen/ Dining	18'11" x 10'11"	5.76 x 3.33 m*
Utility	6'7" x 6'0"	2.01 x 1.84 m
Cloaks	6'0" x 3'2"	1.84 x 0.96 m
Garage	18'1" x 9'1"	5.52 x 2.77 m*

## FIRST FLOOR

Bedroom 1	16'8" x 9'8"	5.08 x 2.95 m
En-suite	7'9" x 4'7"	2.35 x 1.40 m*
Bedroom 2	12'10" x 10'8"	3.91 x 3.24 m*
Bedroom 3	10'0" x 9'3"	3.05 x 2.82 m
Bedroom 4	10'4" x 7'9"	3.15 x 2.35 m
Bathroom	6'9" x 6'4"	2.07 x 1.94 m*

Customers should note this illustration is an example of The Windsor house type. All dimensions indicated are approximate and the furniture layout is for illustrative purposes only. Homes may be 'handed' (mirror image) versions of the illustrations, and may be detached, semi-detached or terraced. Materials used may differ from plot to plot including render and roof tile colours. Detailed plans and specifications are available for inspection for each plot at our Sales Centre during working hours and customers must check their individual specifications prior to making a reservation.

KEY  Hob  Oven  Fridge/freezer  Dishwasher space  Washing machine space  Tumble dryer space  Hot Water Cylinder  
\* Max dimensions Note: Bedroom dimensions taken into wardrobe recess. All wardrobes are subject to site specification. Please see Sales Consultant for further details.

Traditional homes, built the way you remember