



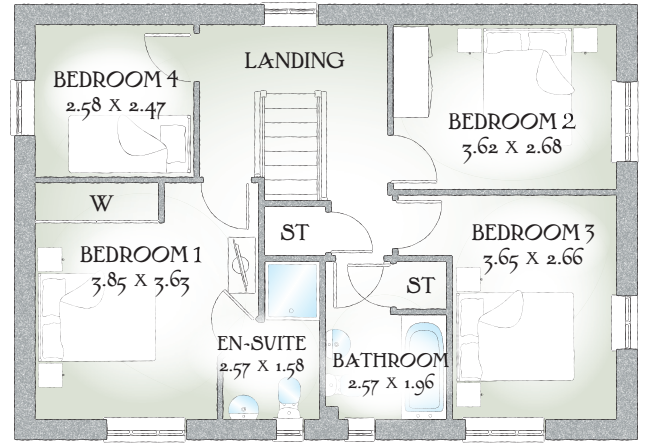
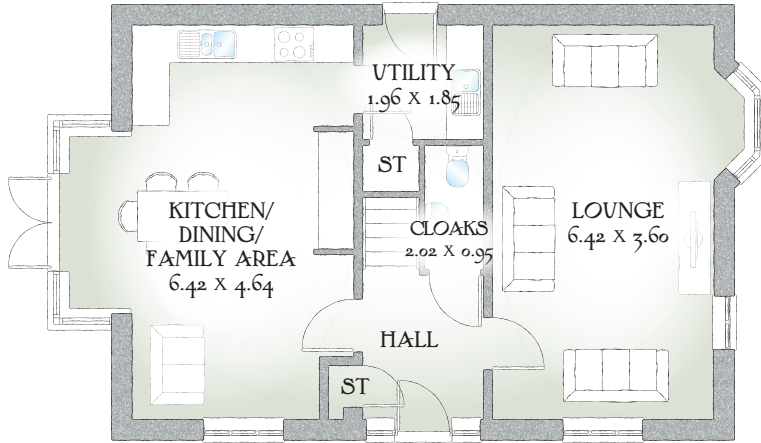
Westington

FOUR BEDROOM HOME



 REDROW

Wessington



FOUR BEDROOM HOME

A delightful, spacious and carefully designed four bedroom family home with a well thought out kitchen and dining area, separate utility room and ample storage makes this a superb house to call home.

GROUND FLOOR

Lounge	21'0" x 11'9"	6.42 x 3.60m
Kitchen/ Dining/ Family Area	21'0" x 15'2"	6.42 x 4.64m
Utility	6'5" x 6'0"	1.96 x 1.85m
Cloaks	6'7" x 3'1"	2.02 x 0.95m

FIRST FLOOR

Bedroom 1	12'7" x 11'10"	3.85 x 3.63m
En-suite	8'4" x 5'2"	2.57 x 1.58m
Bedroom 2	11'10" x 8'9"	3.62 x 2.68m
Bedroom 3	11'11" x 8'4"	3.65 x 2.66m
Bedroom 4	8'5" x 8'1"	2.58 x 2.47m
Bathroom	8'5" x 6'5"	2.57 x 1.96m

Customers should note this illustration is an example of The Wessington house type. All dimensions indicated are approximate and the furniture layout is for illustrative purposes only. Homes may be 'handed' (mirror image) versions of the illustrations, and may be detached, semi-detached or terraced. Materials used may differ from plot to plot including render and roof tile colours. Detailed plans and specifications are available for inspection for each plot at our Sales Centre during working hours and customers must check their individual specifications prior to making a reservation.

KEY Hob ST Cupboard W Wardrobe

*Max dimensions Note: Bedroom dimensions taken into wardrobe recess. All wardrobes are subject to site specification. Please see Sales Consultant for further details.

Traditional homes, built the way you remember

 **REDROW**
A BETTER WAY TO LIVE